

# Fife Partnership Board

[www.fife.gov.uk/committee/fifepartnership](http://www.fife.gov.uk/committee/fifepartnership)

Tuesday, 21 November, 2023 - 10.00 a.m.

## AGENDA

	<u>Page Nos.</u>
1. <b>APOLOGIES FOR ABSENCE</b>	
2. <b>MINUTE</b> – Minute of Fife Partnership Board Meeting of 17 August 2023	2 – 4
3. <b>FIFE'S UK SHARED PROSPERITY INVESTMENT PLAN GOVERNANCE UPDATE</b> – Report by the Head of Business & Employability	5 – 7
4. <b>CHILDREN'S SERVICES PLAN 2023-26</b> – Report by Chair of Children in Fife	8 – 15
5. <b>PLAN FOR FIFE – ANNUAL REVIEW OF PRIORITIES AND AMBITIONS</b> – Report by the Executive Director - Communities	16 – 35
6. <b>SCOTTISH ENTERPRISE POSITION STATEMENT - VERBAL UPDATE</b>	
7. <b>DATE OF NEXT MEETING</b> - 13 February 2024	

**Partners are reminded that should they have queries on the detail of a report they should, where possible, contact the report authors in advance of the meeting to seek clarification.**

Lindsay Thomson  
Head of Legal and Democratic Services  
Finance and Corporate Services

Fife House  
North Street  
Glenrothes  
Fife, KY7 5LT

14 November, 2023

If telephoning, please ask for:  
Michelle Hyslop, Committee Officer, Fife House 06 ( Main Building )  
Telephone: 03451 555555, ext. 445279; email: [Michelle.Hyslop@fife.gov.uk](mailto:Michelle.Hyslop@fife.gov.uk)

Agendas and papers for all Committee meetings can be accessed on  
[www.fife.gov.uk/committees](http://www.fife.gov.uk/committees)

**FIFE PARTNERSHIP BOARD – REMOTE MEETING**

17 August, 2023

2.00 pm – 3.20 pm

**PRESENT:** Councillors David Ross (Convener), David Alexander and Linda Erskine; Ken Gourlay, Chief Executive, Fife Council; Carol Potter, Chief Executive, Joy Tomlinson, Director of Public Health, Alistair Morris, Chair of NHS Fife Board, Lucy Denvir, Consultant in Public Health, NHS Fife; Nicky Connor, Director of Health and Social Care Partnership; Lynne Cooper, Regional Engagement Partner, Scottish Enterprise; Angela Penman, DWP Partnership Manager, Department of Work & Pensions; Lynne Cooper, Regional Engagement Partner, Scottish Enterprise; Evonne Boyd, Head of Operations, Skills Development Scotland ; Brian Butler, Partnership Manager, SESTran; Jim Metcalfe, Principal, Fife College; Chief Superintendent Derek McEwan, Police Scotland and Alison Taylor, Place Director, Scottish Government.

**ATTENDING:** Michael Enston, Executive Director - Communities; Sheena Watson, Team Manager (Temporary Programme Manager), Community Investment; Lauren Bennett, Policy Officer; Sharon Murphy, Policy Co-ordinator (Community Planning); Gill Musk, Policy Officer; Communities and Neighbourhoods; Gordon Mole, Head of Business & Employability, Economy Planning and Employability Services and Michelle Hyslop, Committee Officer, Committee Services.

**ALSO ATTENDING:** Andrew Connal, Team Leader – Public Service Reform & Community Planning, Scottish Government; Andrew Ferguson, SESTran Consultant and Hattie James, Project Officer, SESTran.

**27. MINUTE**

The Board considered the minute of the Fife Partnership Board Meeting of 2 May 2023.

**Decision**

The Board agreed to approve the minute.

**28. UPDATE ON COMMUNITY PLANNING**

The Board considered a report by the Team Leader, Public Service Reform and Community Planning (Scottish Government), which provided partners with an update on the latest developments in community planning following the Scottish Parliament's Local Government, Housing and Planning committee's inquiry into community planning and following the publication of the Verity House Agreement.

**Decision**

The Board noted the update on community planning.

**29. COMMUNITIES & WELLBEING PARTNERSHIP REPORT - AMBITIONS 3 & 7**

The Board considered a report by the Public Health Consultant and Chair of the Communities and Wellbeing Partnership, NHS Fife providing partners with an update on the work of the Community and Wellbeing Partnership and advised of the progress against actions in the Health & Wellbeing Delivery Plan.

**Decision**

The Board: -

- (1) considered the achievements, challenges and areas for development set out in section 2 of the report;
- (2) noted the Health and Wellbeing Progress report as detailed in Appendix 1; and
- (3) identified other opportunities for collaborative working between partners to strengthen the boards progress towards ambitions 3 and 7 of the Plan for Fife.

**30. DIRECTOR OF PUBLIC HEALTH ANNUAL REPORT 2023**

The Board considered a report by the Director of Public Health, NHS Fife which provided an update on the Public Health Annual Report for 2023.

**Decision**

The Board endorsed the Director of Public Health Annual Report.

**31. TACKLING POVERTY & PREVENTING CRISIS: ANNUAL REPORT 2022/23 -**

The Board considered a report by the Executive Director, Communities updating partners on the Plan for Fife ambitions and priorities on Tackling Poverty and Preventing crisis for the reporting period 2022/2023.

**Decision**

The Board: -

- (1) noted the progress in Fife against the Plan for Fife ambition and priority on tackling poverty and preventing crisis; and
- (2) endorsed the report set out in Appendix 1 of the report in relation to reporting for the Child Poverty (Scotland) Act 2017.

**32. TACKLING POVERTY AND CRISIS PREVENTION BOARD AND WINTER 2023/24 PROGRAMME PRIORITIES**

The Board considered a report by the Executive Director, Communities which provided partners with an update on the priorities for the Tackling Poverty & Preventing Crisis Board (TPPC) and presented the proposed winter programme for 2023/2024.

**Decision**

The Board noted the forward programme of priorities, which included the proposed winter programme for 2023/2024.

**33. FIFE ECONOMIC STRATEGY 2023-30**

The Board considered a report by the Head of Business and Employability which asked partners to comment on and endorse the Fife Economic Strategy 2023-2030.

**Decision**

The Board: -

- (1) endorsed the new Fife Economic Strategy for 2023-2030;
- (2) noted that a delivery plan would be prepared by Fife Council's Head of Business & Employability in liaison with the Plan4Fife Leading Economic Recovery (LER) Board and other key stakeholders;
- (3) noted the progress against the key priorities identified in the strategy and noted that these would be monitored and reported to the LER Board;
- (4) noted that approval for specific projects would be brought forward as part of the strategy and the delivery plan; and
- (5) agreed that the approval process would be sought by partner organisations in order to take the project forward.

**34. GOSESTRAN - PRESENTATION**

The Board welcomed the presentation from Andrew Ferguson and Hattie James in regard to GoSestran.

**35. DATE OF NEXT MEETING**

The next Board meeting would take place on 21 November 2023

# Fife Partnership Board

[www.fife.gov.uk/committee/fifepartnership](http://www.fife.gov.uk/committee/fifepartnership)

21 November 2023

Agenda Item No. 3

## Fife's UK Shared Prosperity Investment Plan Governance Update

**Report by:** Gordon Mole, Head of Business & Employability Services

**Wards Affected:** All

### Purpose

To present an update on the governance arrangements for Fife's UKSPF Investment Plan for consideration by the Fife Partnership Board.

### Recommendation(s)

Board members are asked to consider and endorse the governance arrangements for Fife's UKSPF Investment Plan

### Resource Implications

None.

### Legal & Risk Implications

There are no legal and risk implications from this Report.

### Impact Assessment

An Equality Impact Assessment (EqIA) is not required as there are no changes to existing service delivery and policy.

The Fairer Scotland Duty, which came into force on 1 April 2018, requires the Council to consider how it can reduce inequalities of outcome caused by socio-economic disadvantage when making strategic decisions. Both the Plan for Fife and Fife's UKSPF Investment Plan align with this Duty in their commitment to working towards achieving Inclusive Growth and Jobs and Thriving places.

### Consultation

The Community planning partners within the Advisory Groups have been consulted on the Terms of Reference for the governance.

## 1.0 Background

---

- 1.1 In August 2022, the Fife Partnership Board endorsed the approach to developing the UKSPF Investment Plan. The relevant priorities of the Plan4Fife 2017-27 and its Recovery and Renewal Plans 2021-24, formed the basis of the UKSPF Investment Plan priorities. This included the advisory governance, the prioritisation principles, allocations by UKSPF Investment Priority and process to confirm interventions for 2023/24 and 2024/25.
- 1.2 The Fife Partnership Board endorsed creation of a subgroup of the Fife Partnership Board, to provide oversight to the UKSPF Investment plan, and agreement of the requirement to invite Fife's MPs and representatives from the UK Government's Levelling Up Team to attend the Subgroup.
- 1.3 The Fife Partnership Board also endorsed the extension of the remit of the Employment Delivery Partnerships to provide advice to the People & Skills Investment Priority; the re-establishment of an economy delivery partnership to provide advice to the Supporting Local Businesses Investment Priority and the formation of a Communities and Place Delivery Partnership with members drawn from the Environment Delivery Partnership, Addressing Climate Change, Poverty and Crisis Management, Leading Economic Recovery, Community Wealth Building Recovery & Renewal Delivery Boards
- 1.4 The Plan for Fife 2017 – 27 and its Recovery and Renewal Plan for Fife 2021-24 identify that technological and digital innovation, together with skills, will be crucial to Fife's recovery. Immediate actions include to ensure that people are digitally capable and connected, and to adopt and innovate in smart technologies to build on the progress made with digital approaches during the pandemic. Acting on evidence actions include better use of data and project intelligence to deliver better outcomes and to improve data sharing across the Partnership.
- 1.5 The UK Government approved Fife's UKSPF Investment Plan in December 2022. Fife Council as Accountable Body approved Fife's UK Shared Prosperity Investment Plan to initiate operational delivery of the interventions for 2023/24 and 2024/25. Delivery commenced in Quarter 4 2022/23. The report to UK Government in April 2023 confirmed the outturn for 2022/23 and the carry over into 2023/24.

## 2.0 Update on UKSPF Governance approach

---

- 2.1 In Quarter 1 2023/24, the Opportunities Fife Partnership (OFP) approved the commissioning of Employability Pathway activity, using allocation from No One Left Behind (NOLB), UK Shared Prosperity Fund (UKSPF) and the OFP's core budget. This was based on the consultation undertaken with service users, delivery organisations and the Opportunities Fife Partnership in the co-design of the refreshed Commissioning Framework for employability activity in Fife.
- 2.2 On 29 June 2023, Fife Council's Cabinet Committee approved the recommendations made by the OFP scoring panel and the Opportunities Fife Partnership for employability pathway delivery for the period 2023-25. This included the recommended allocations to the preferred bidders for the delivery of employability activity and infrastructure support for the Employability Pathway, as set out in Appendix 1 to the report.
- 2.3 The Cabinet Committee delegated to the Head of Business and Employability Services, in consultation with the Head of Finance and Head of Legal and Democratic Services to complete all necessary contracting arrangements for the delivery of employability pathway programmes between 2023 and 2025. These have been put in place following clarification with Scottish Government as to the application of new Fair Work terms and conditions.

- 2.4 An investment of £3,750,081 is by UK Government through the UK Shared Prosperity Fund for People & Skills is included for the period 2023-25. This allocation is divided between the following Interventions:
- S31: Employment Activity support for economically inactive people - £852,679
  - S33: Enrichment & volunteering activities - £650,000
  - S36: Local areas to fund local skills need - £827,402
  - S37: Green skills courses - £720,000
  - S39: Education & Skills targeting the vulnerable leaving school - £700,000
- 2.5 Cabinet Committee also delegated to the Head of Business and Employability Services, in consultation with the Opportunities Fife Partnership Executive, to amend funding levels to projects based on project performance and available resources, including such additional funding as may be made available from Scottish and UK Governments in year through No One Left Behind, UKSPF and any other relevant funding sources.
- 2.6 The Multiply Investment priority is also consulting with the Opportunities Fife partnership in the design and commissioning of its Interventions.
- 2.7 Supporting Local Businesses and Communities & Place Advisory Groups and the UKSPF Subgroup of the Fife Partnership have met during 2023/24 and agreed their Terms of Reference and membership. Regular meetings will be held to review the UKSPF Investment Plan during the life of the Plan. The first reporting period for the UK Government on the UKSPF Investment Plan is to 30 September 2023.

## 3.0 Conclusions

---

- 3.1 This Report summarises the process underway to establish the advisory governance for Fife's UKSPF Investment Plan that commenced its delivery in Quarter 4 2022/23. The approach includes mature delivery partnerships such as Opportunities Fife and new ones where the first step has been to agree their Terms of Reference and membership.

### Background Papers

The following papers were relied on in the preparation of this report in terms of the Local Government (Scotland) Act, 1973:-

- Fife Partnership Board meeting: August 2022 [FPB-Public-Agenda-Pack-2022-08-23](#)
- Fife Council's Cabinet Committee: August 2022 [Agenda-and-papers-for-the-Cabinet-Committee-25th-August-2022](#)
- Fife Council's Cabinet Committee: March 2023 [Agenda-and-Papers-for-Meeting-of-Cabinet-Committee-of-9-March-2023](#)
- Fife Council's Cabinet Committee: 29 June 2023 [Agenda-and-Papers-for-Meeting-of-Cabinet-Committee-of-29-June-2023](#)

### Report Contact

Morag Millar  
Strategic Growth & City Deals Programme Manager  
Fife House, Glenrothes  
Telephone: 03451 55 55 55 + VOIP Number **44 24 37**  
Email: [morag.millar@Fife.gov.uk](mailto:morag.millar@Fife.gov.uk)



# Fife Partnership Board

[www.fife.gov.uk/committee/fifepartnership](http://www.fife.gov.uk/committee/fifepartnership)

21 November 2023

Agenda Item No. 4

---

## Children's Services Plan 2023-26

---

**Report by:** Lisa Cooper, Chair, Children in Fife

---

### Purpose

---

To present the Fife Children's Services Plan 2023-26, as a basis for contributing to delivery of the Plan for Fife and for improving the outcomes and experiences of children, young people and families across Fife.

### Recommendations

---

That Fife Partnership Board nbnmmn,jm09098o0io09uld:

1. Consider and endorse the Fife Children's Services Plan 2023-26.
2. Confirm that, in future, the Fife Partnership Board should review and approve any future updates to the Fife Children's Services Plan, as well as the Fife Children's Services Annual Report.

### Resource Implications

---

The paper outlines the Directorate's focus for improvement, both as a Directorate and through wider partnership working, to ensure that outcomes for children and young people in Fife improve as the Directorate works within its current budget.

### Consultation

---

The development of the Fife Children's Services Plan 2023-26 has been informed by an ongoing process of consultation and engagement with leaders and representatives of staff from across the children's services partnership, together with feedback from children, young people and families gathered through a range of sources.



## 1.0 Background

---

- 1.1 The Children's Services Plan is an overarching strategic plan, whose purpose is to safeguard, support and promote the wellbeing of all children. The development of the children's services plan is a statutory requirement, under the terms of the Children and Young People (Scotland) Act 2014.
- 1.2 Development of the Fife Children's Services Plan is overseen by Children in Fife, the leadership group of the Fife Children's Services Partnership. Children in Fife provides oversight of strategic planning across all aspects of children's services and coordinates.
- 1.3 The development of the Fife Children's Services Plan is closely connected to the development, delivery and review of a range of other statutory plans and reports for children, including:
  - The Child Protection Improvement Plan.
  - The Corporate Parent Plan.
  - Fife's Local Child Poverty Action Report.
  - Fife's Report on Children's Rights.
- 1.4 The Fife Children's Services Plan provides a basis for improving outcomes for children, young people and families. The Plan runs over a three-year planning period, as defined in the legislative requirements of the Children and Young People (Scotland) Act 2014. The new statutory planning period is 2023-26
- 1.5 In line with pre-existing arrangements for the development and sign-off of the statutory children's services plan, the Fife Children's Services Plan 2023-26 was approved by Children in Fife in June 2023 and submitted to the Scottish Government. As noted at appendix 1, the Fife Children's Services Plan 2023-26 is available at: [Jnjhjmnnnnnmjkuyh/](#)
- 1.6 Children in Fife would welcome confirmation that this arrangement should be updated to ensure that, in future, the Fife Partnership Board reviews and approves any future updates to the Fife Children's Services Plan, as well as the Fife Children's Services Annual Report.

## 2.0 Fife Children's Services Plan 2023-26

---

- 2.1. Development of the Fife Children's Services Plan 2023-26 was informed by a **Joint Strategic Needs Assessment (JSNA)**, developed during the autumn and winter of 2022. The plan provides an overview of:
  - The approach used to develop the JSNA Assessment (page 6).
  - Key sources of evidence reviewed in the JSNA Assessment (page 7).
  - Key messages regarding the effectiveness of arrangements for current partnership working (page 8).
  - Key challenges highlighted through a review of evidence about experiences (page 9) and outcomes (page 10) of children, young people and families.

- 2.2. Five **improvement priorities** have been identified for the Fife Children's Services Plan 2023-26 (page 11), to address the key challenges identified through the Joint Strategic Needs Assessment. These relate to the need:
- To address significant challenges related to **Health and Wellbeing**.
  - To improve our approach to **Supporting Families**.
  - To improve **Engagement of children, young people and families**.
  - To ensure that **the Needs of our Most Vulnerable** children and young people are met.
  - To address the wider challenges of **Equity and Equality** across a range of forms of disadvantage, from the social (e.g. poverty) to the individual (e.g. additional support needs, ethnicity, disability).
- 2.3. The main part of the Fife Children's Services Plan 2023-26 (pages 12-34) outlines a **Plan for Improvement** to address these improvement priorities. It also describes the approach to partnership working that will support this activity. This includes arrangements to ensure a close alignment of:
- Work to address child poverty with the wider work to tackle poverty, overseen by the Tackling Poverty and Preventing Crisis Board.
  - Work to meet the needs of our most vulnerable children and young people with work on Keeping the Promise in Fife, as well as the related statutory requirements of corporate parenting and child protection.
- 2.4. The final section of the Fife Children's Services Plan 2023-26 provides an overview of how the plan:
- Supports key aspects of national policy (page 35).
  - Meets the full statutory requirements of children's services planning, as set out in statutory and related planning guidance (page 36).
  - Will promote the rights of children in Fife (page 37).

## 3.0 Key changes in the new plan

---

- 3.1. This section summarises some of the key changes to the Fife Children's Services Plan 2023-26, in comparison with the previous Children's Services Plan.
- 3.2. The Fife Children's Services Plan 2021-23 had four improvement priorities:
- **Delivering the Promise** for our care experienced young people. This developed Fife's implementation of the Promise, following the publication of the findings of the Independent Care Review in 2020.
  - **Supporting Wellbeing**. This recognised that the Covid Pandemic had a significant and adverse impact on the wellbeing of many children, young people and families.
  - **Closing the Equity Gap**. This recognised that the Covid pandemic had resulted in a widening in the equity gap for many outcomes, and that significant equity persisted across a wider range of outcomes.
  - **Promoting Children's Rights**, This recognised that the voice of the child is vital for the design and delivery of children's services. It also reflected the importance of ensuring that the United Nations Convention on the Rights of the Child (UNCRC) was well embedded in Fife.

- 3.3. The Fife Children’s Services Plan 2023-26 includes the following improvement priorities:
- **Health and Wellbeing.** This reflects the fact that further work is needed to improve outcomes relating to mental health, physical health and sexual health and substance use. The work will be progressed through groups established in previous children’s services plans, and will strengthen links with the Alcohol and Drug Partnership and Health and Social Care Partnership.
  - **Supporting Families.** This recognises the importance of strengthening early intervention and prevention. It supports work funded through the Whole Family Wellbeing Fund, which was established during the previous children’s services plan. It is closely connected to the ongoing development of a No Wrong Door approach for communities.
  - **Engagement of Children, Young People and Families.** This recognises the importance of embedding ongoing work to reflect the voice of children and families in service design and delivery. The work is being overseen by the Children’s Rights Group, which also has a role in ensuring that children’s rights are promoted across the workstreams of the children’s services plan.
  - **Equity and Equality.** This recognises the importance of a continued focus on closing equity gaps in outcomes. The work links with action to mitigate the impact of poverty, progressed by the Tackling Poverty and Preventing Crisis Board within the Plan for Fife. It will also develop a framework for monitoring progress in breaking inter-generational cycles of disadvantage. The oversight group also has a role in ensuring that work undertaken across the Children’s Services Plan is closing the equity gaps seen across a wide range of current outcomes.
- 3.4. Children in Fife (the Leadership Group for Fife Children’s Services Partnership) will oversee the implementation and ongoing development of the Children’s Services Plan. It will receive regular reports and updates on progress in delivering the plan. Children in Fife will also play a key role in ensuring that **the needs of our most vulnerable children and young people** are met, ensuring that wider work across the partnership is aligned and supports implementation of the Promise and GIRFEC. This will help to embed progress made in these areas over the course of the previous plan. To support this work, Children in Fife has undertaken a review of its membership to strengthen connections with the Corporate Parenting Board and the Child Protection Committee. A post of Lead Officer for Keeping the Promise in Fife has also been established, in order to help coordinate, develop and deliver actions by Children in Fife to achieve these goals.
- 3.5. Appendix 4 provides an overview of the Fife Children’s Services Plan 2023-26.

## 4.0 Alignment with the Plan for Fife

---

- 4.1. The Children’s Services Partnership works closely with other parts of the wider Fife Partnership to improve outcomes for families and communities in Fife.
- 4.2. The key challenges identified through the Joint Strategic Needs Assessment for children’s services strongly reflect the challenges identified in the most recent Annual Review of Priorities and Ambitions for the Plan for Fife (see appendix 2).

- 4.3. Appendix 4 provides an overview of how work to address the improvement actions within the Fife Children's Services Plan 2023-26 align with – and will help to support delivery of – the most recent update of the Plan for Fife (see appendix 4). In particular:
- The plan will, generally, support immediate actions relating to children and young people and contribute to achieving the longer term ambition of Opportunities for All.
  - The plan's focus on strengthening prevention and early intervention (addressed through the priorities of Supporting Families and meeting the Needs of Our Most Vulnerable children and young people) will support immediate actions relating to No Wrong Doors and contribute to achieving the longer term ambition of Community Led Services.

## 5.0 Reporting of progress

---

- 5.1. A key action of the Fife Children's Services Plan 2021-23 was the development of the Fife Wellbeing Indicator Set, which provides an overview of current outcomes across all aspects of wellbeing for children and young people, benchmarked against national data and showing improvement trends (see pages 40 and 41 of the Fife Children's Services Plan, appendix 1).
- 5.2. The Fife Wellbeing Indicator set will be monitored by Children in Fife, as will measures of progress and impact for the Plan for Improvement set out within the children's services plan (as described in paragraph 2.3).
- 5.3. This evidence will form the basis for an Annual Report on progress in delivering the Children's Services Plan 2023-26, which will be reported to the Fife Partnership Board in future years.

## 6.0 Conclusion

---

- 6.1. The Fife Children's Services Plan 2023-26:
- Provides a basis for improving the outcomes and experiences of children, young people and families across Fife.
  - Meets the full statutory requirements of children's services planning, as set out in statutory and related planning guidance.
  - Aligns with, and will help to ensure the delivery of, the Plan for Fife.
- 6.2. Fife Partnership Board is recommended to:
- Consider and endorse the Fife Children's Services Plan 2023-26.
  - Confirm that the Fife Partnership Board should review and approve any future updates to the Fife Children's Services Plan, as well as the Fife Children's Services Annual Report.

### Appendices

**Appendix 1:** Fife Children's Services Plan 2023-26 (see: <http://www.fife.gov.uk/FifeCSPlan2023>).

**Appendix 2:** Plan for Fife - Priorities and Ambitions April 2023 (see: [https://www.fife.gov.uk/\\_data/assets/pdf\\_file/0036/477639/Plan-for-Fife-Priorities-and-Ambitions-April-2023.pdf](https://www.fife.gov.uk/_data/assets/pdf_file/0036/477639/Plan-for-Fife-Priorities-and-Ambitions-April-2023.pdf)).

**Appendix 3:** Overview of the Fife Children's Services Plan 2023-26, showing key groups for delivering the plan.

**Appendix 4:** Framework showing how improvement work within the Fife Children's Services Plan aligns with and will support delivery of the Plan for Fife.

**Appendix 5:** Plan for Fife 2021-24 update (see: <https://our.fife.scot/plan4fife/plan-for-fife-2021-24>).

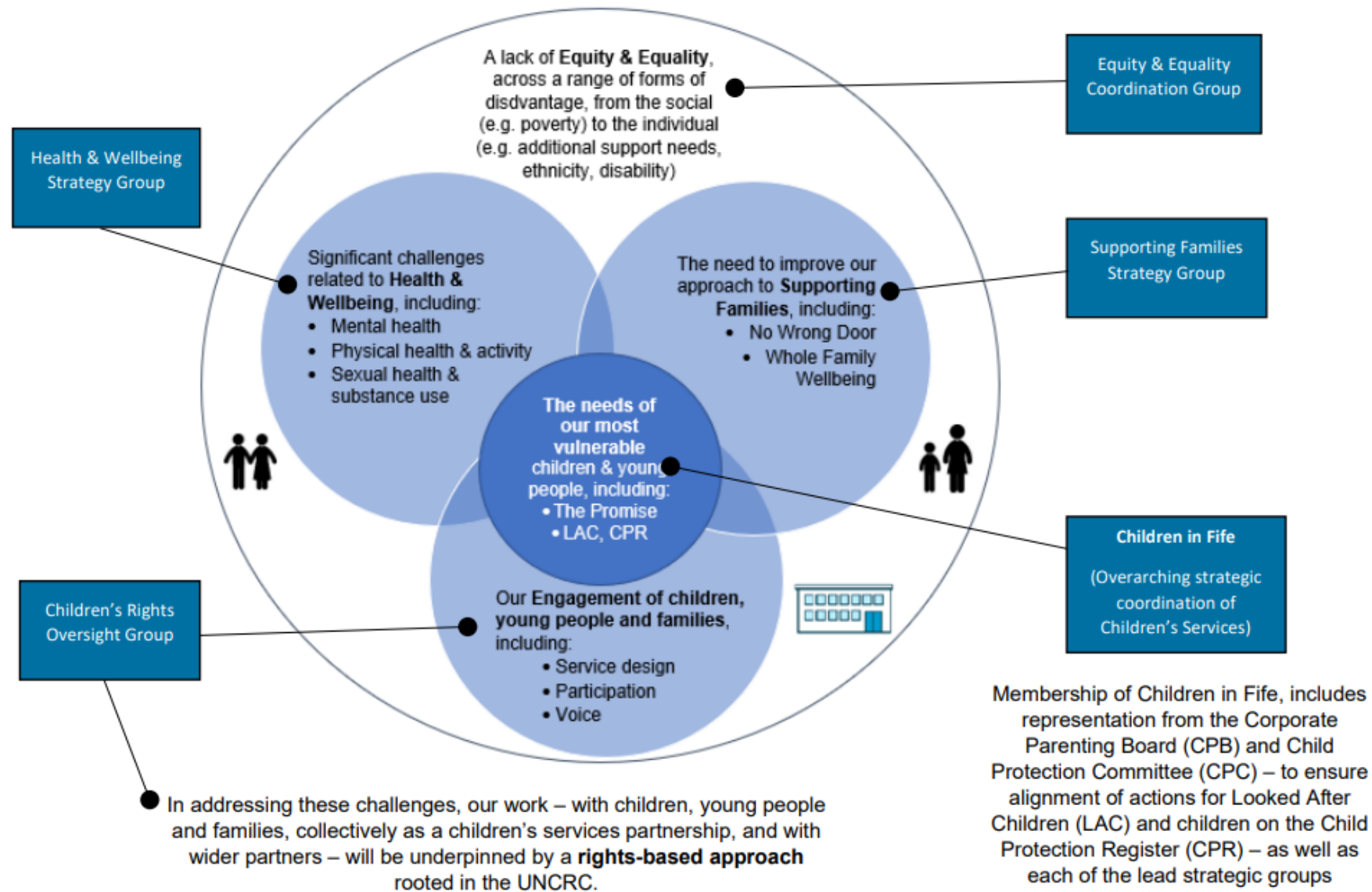
**Report Contacts:**

Lisa Cooper  
Head of Service  
Primary & Preventative Care Services  
Fife Health & Social Care Partnership

Email: [lisa.cooper@nhs.scot](mailto:lisa.cooper@nhs.scot)

Stuart Booker  
Improvement Officer  
(Strategic Planning and Performance)  
Education & Children's Services  
Fife Council  
Email: [stuart.booker@fife.gov.uk](mailto:stuart.booker@fife.gov.uk)

**Appendix 3 – Overview of the Fife Children’s Services Plan 2023-26, showing key groups for delivering the plan.**





**Appendix 4** – Framework showing how improvement work within the Fife Children’s Services Plan aligns with and will support delivery of the Plan for Fife (page references relate to the Plan for Fife 2021-24 update – see appendix 4).

How the Fife Children’s Services Plan 2023-26 will help to address **Immediate Actions** relating to **Children and Young People** and support achievement of the longer term **Ambition of Opportunities for All**

<b>Theme</b>	<b>Immediate Actions</b> (page 20)	<b>Impact Measures – Opportunities for All</b> (page 25)
Equity and Equality	<ul style="list-style-type: none"> <li>• Provide targeted support to address the impact of the pandemic on attainment and the poverty-related attainment gap</li> <li>• Establish better learning pathways to college, training, volunteering and employment</li> </ul>	<ul style="list-style-type: none"> <li>• Improved educational attainment in all groups</li> <li>• Increased equality of opportunity</li> <li>• Increased staff confidence in using interventions to close the attainment gap</li> <li>• More school leavers with qualifications</li> <li>• More school leavers entering a positive destination</li> </ul>
Health & Wellbeing	<ul style="list-style-type: none"> <li>• Respond to the pandemic’s impact on young people’s learning, emotional and physical wellbeing</li> </ul>	<ul style="list-style-type: none"> <li>• More children reaching early developmental milestones</li> <li>• Improved mental health</li> <li>• Improved trauma awareness across services</li> </ul>
Engagement of Children, Young People & Families	<ul style="list-style-type: none"> <li>• Promote children’s rights and wellbeing through the children’s services plan and other plans</li> </ul>	<ul style="list-style-type: none"> <li>• Increased participation and engagement of children and young people</li> </ul>

How the Fife Children’s Services Plan 2023-26 will help to address **Immediate Actions** relating to **No Wrong Door** and support achievement of the longer term **Ambition of Community Led Services**

<b>Theme</b>	<b>Immediate Actions</b> (page 21)	<b>Impact Measures – Community Led Services</b> (page 28)
Supporting Families	<ul style="list-style-type: none"> <li>• Simplify contact and referral processes</li> </ul>	<ul style="list-style-type: none"> <li>• People consider services are more joined up</li> <li>• More community-based models of social provision</li> </ul>
The Needs of our Most Vulnerable Children & Young People	<ul style="list-style-type: none"> <li>• Develop wraparound support in specific service areas</li> </ul>	<ul style="list-style-type: none"> <li>• Reduced levels of need evidenced by lower demand for social care services through preventative approaches across all sectors</li> </ul>

# Fife Partnership Board

[www.fife.gov.uk/committee/fifepartnership](http://www.fife.gov.uk/committee/fifepartnership)

21<sup>st</sup> November 2023

Agenda Item No. 5

---

## Plan for Fife – Annual Review of Priorities and Ambitions

---

**Report by:** Michael Enston, Executive Director, Communities Directorate, Fife Council

---

### Purpose

---

To provide a high level review of progress against Plan for Fife priorities and ambitions and to set out improvements to the monitoring approach.

### Recommendations

---

That Fife Partnership Board

1. Considers the progress and challenges highlighted in this second review covering the period 2022-2023.
2. Notes plans to refine and improve the monitoring approach in 2024 as set out in section 3.0.

### Resource Implications

---

None.

### Consultation

---

Presentation of an annual review report to Fife Partnership Board has been approved by the Recovery & Renewal Leadership Board.



# 1.0 Background

---

- 1.1 Annual reporting to Fife Partnership Board on performance against Fife's Local Outcome Improvement Plan (LOIP) is a requirement of the statutory duty of Community Planning.
- 1.2 The attached Annual Ambitions Report 2023 is the second report in this format and covers the period 2022-2023.
- 1.3 In addition to the assessment presented in this report, an exercise to illustrate the range and extent of activities and achievements undertaken by partners in the 2022-2023 period has also been started and is available as [online content](#).
- 1.4 This is not yet a comprehensive partner overview but offers a starting point to further develop public facing content which provides an on-going narrative about the work to deliver a fairer Fife throughout the year and the impact it is having in communities.

# 2.0 Progress on Priorities & Ambitions

---

- 2.1 This review of Priorities and Ambitions - not unexpectedly given the pandemic legacy and cost of living crisis - shows a mixed and moving picture of progress across the range of activity, indicators, and measures.
- 2.2 In relation to the Plan for Fife Recovery & Renewal Priorities there is evidence of progress particularly in relation to:
  - Action to tackle poverty and prevent crisis
  - Embedding the Community Wealth Building approach into systems and processes
  - Securing funding to support the creation of jobs and opportunities and improve town centres
  - The range of community climate initiatives and supporting the reduction in Fife's carbon footprint.
- 2.3 Regarding progress against the Plan for Fife Ambitions, an assessment based on the indicator set aligned to the Plan suggests a continuation of mixed results across the board. Section 3 of the attached report provides commentary on each Ambition with Section 4 outlining a headline summary position.

## 3.0 Next steps

---

- 3.1 Note, the State of Fife indicators have not been included in the report as there has been little change to this indicator set since this was last reported in May 2023. These will be reported on in the 2024 Strategic Assessment. In addition, the Community Planning Outcome Indicators (CPP benchmarking framework) have been updated and these are available online. [Community Planning Outcomes Profile | Improvement Service](#)
- 3.2 Informed by the 2023 Plan for Fife Performance Indicator consultation, and the potential for Fife to become a Marmot region, the State of Fife, Community Planning Outcome Indicators and Plan for Fife measures will be reviewed and reset next year.
- 3.2 Partners are invited to visit the online platform referenced at 1.3 and to note that work is on-going to develop a mechanism to more systematically capture partner achievements, news and successes to support the presentation of a comprehensive public performance report against the LOIP in 2024.

## 4.0 Conclusion

---

- 3.1 This report presents the second high level review of progress against Fife's priorities and ambitions as set out in the Plan for Fife and plans to refine and improve the monitoring approach from 2024 onwards.

### Appendices

#### Appendix 1: Plan for Fife Annual Review of Priorities and Ambitions 2023

#### Report Contacts:

Sinead O'Donnell  
Policy & Delivery Manager  
Fife Council  
[sinead.odonnell@fife.gov.uk](mailto:sinead.odonnell@fife.gov.uk)

Coryn Barclay  
Research & Insight Manager  
Fife Council  
[coryn.barclay@fife.gov.uk](mailto:coryn.barclay@fife.gov.uk)

# Annual Review of Priorities and Ambitions



2023

## Annual Review of Priorities and Ambitions

The 2021-24 Plan4Fife update recognised that the pace and extent of progress, coupled with the challenges of the Covid-19 Pandemic, necessitated a shift in how we work to deliver our ambitions.

As part of this, an annual high-level review of progress against achieving these ambitions was introduced. This is the second of these reports. The first can be found here

[www.fife.gov.uk/performance](http://www.fife.gov.uk/performance)






## Contents

	Page
1. Context and challenges	2
2. Recovery and Renewal Priorities	3
3. Review of Ambitions	8
4. Summary	12



# 1. Context and challenges

The challenges identified in the 2017-2027 Plan4Fife under the original four themes remain and have since been exacerbated by external factors - including the pandemic, and the cost-of-living crisis - which have affected both people and places. A fifth theme of Addressing Climate Change was added in the 2021-24 Plan, recognised the urgency of the need to support communities to adapt to climate challenges.

<b>Inclusive Growth &amp; Jobs</b> 	<b>Opportunities for All</b> 
<ul style="list-style-type: none"> <li>• Lack of investment in Fife’s industrial estates and businesses infrastructure</li> <li>• Fife, and particularly mid-Fife, needs more businesses, with more of these trading outside Fife and investing in innovation and growth to improve their resilience.</li> <li>• Digital technology is rapidly changing, and people and businesses need to keep up to date with this, so they are not left behind.</li> <li>• We are not making the most of all of our tourism assets to grow existing or new businesses.</li> <li>• Travelling around Fife to access work can be difficult and the cost of travel can also be a barrier.</li> </ul>	<ul style="list-style-type: none"> <li>• Too many children in Fife live in poverty.</li> <li>• Too few children are ready to learn when they start school. There are significant gaps in health, well-being and children’s attainment between the most and least deprived areas in Fife.</li> <li>• Many people in Fife are unable to manage financially and suffer from significant insecurity and lack of control as a result.</li> <li>• People’s life chances and ability to participate are being affected by physical and mental well-being and health inequalities.</li> <li>• We need to make sure that everyone without work, including people with a disability and mental health issues, gains the skills and has access to the support they need to enter and sustain employment.</li> </ul>
<b>Thriving Places</b> 	<b>Community Led Services</b> 
<ul style="list-style-type: none"> <li>• Our town centres need to meet changing needs in order to support viable mixed economies and communities.</li> <li>• The quality of the local environment in many communities is poorer than in other parts of Fife.</li> <li>• Fife’s population is changing rapidly, with more than 20,000 new homes needed over the next 10 years, bringing both economic opportunities for Fife but also increasing pressure on our public services.</li> <li>• Too many homes in Fife are poor quality, and Fife has high levels of fuel poverty.</li> <li>• Many of our community facilities and amenities are in poor condition and do not meet the needs of local people.</li> </ul>	<div data-bbox="1120 1161 2163 1236"> <b>Addressing the Climate Emergency</b>  </div> <ul style="list-style-type: none"> <li>• Fife declared a climate emergency in 2019</li> <li>• Meeting net zero emissions targets will be extremely challenging.</li> <li>• Significant investment will be needed to support adaptation.</li> <li>• Those communities most affected will be least resilient to climate change.</li> </ul>

## 2. Recovery and Renewal Priorities

The 2021-24 Plan identified the need to continue to address the ambitions of the original 2017-2027 plan, whilst addressing new priorities for recovery and renewal coming from the pandemic and the accelerating climate emergency.

The desired outcomes set out in the 2021-24 Plan for each of the Recovery & Renewal Priorities remain the guiding focus for the Delivery Boards and will be used as the basis for reporting back available metrics in 2024 at the end of the three-year period.

Desired outcomes	
<b>Community Wealth Building</b>	<ul style="list-style-type: none"> <li>● Increased local procurement</li> <li>● More Fife employers paying the living wage</li> <li>● Greater number of social enterprises</li> <li>● Increased recruitment from under-represented and deprived communities</li> <li>● More vacant, derelict and contaminated land brought into productive use</li> <li>● Increase in value of community benefits from procurement</li> </ul>
<b>Tackling poverty and preventing crises</b>	<ul style="list-style-type: none"> <li>● More people's incomes have been maximised</li> <li>● Lower cost barriers to accessing services</li> <li>● More sustainable access to food</li> <li>● More people satisfied with services</li> <li>● Improved evidence base relating to poverty and crisis</li> </ul>

Desired outcomes	
<b>Leading economic recovery</b>	<ul style="list-style-type: none"> <li>● Business numbers recovered to pre-pandemic levels</li> <li>● Employment levels back to pre-pandemic levels</li> <li>● Tourism sector grows back</li> <li>● Revived and repurposed town centres</li> <li>● Required strategic investment achieved</li> </ul>
<b>Reducing the impact of the climate emergency</b>	<ul style="list-style-type: none"> <li>● Greater resilience to climate change</li> <li>● Increased community capacity to tackle climate change</li> <li>● Reduced carbon emissions</li> </ul>

<b>Community Wealth Building</b> <b>Progress</b>	<b>Challenges</b>
<ul style="list-style-type: none"> <li>• Fife Council adoption of CWB policy framework across the organisation supporting a system-wide approach.</li> <li>• NHS Fife and FVA joint work on development of a community benefits portal matching contract suppliers with community needs.</li> <li>• Fife Council’s revised Scheme of Tender Procedures approved with new conditions to support CWB agenda, including a formal requirement to consider at least one ‘local’ Fife based supplier in any quotation exercise.</li> <li>• Fife Council’s pledge is the first within the Edinburgh and South East Scotland city region deal to embed CWB within capital delivery.</li> <li>• Fife College and Fife Council implemented joint reporting and articulation of benefits which uses the Themes Outcomes and Measures approach in relation to major construction projects.</li> <li>• Fife Council adoption of a ‘Life Chances Model’ to progressive recruitment which matches employability participants with vacancies and provides a guaranteed interview opportunity.</li> <li>• Review of one-year CWB partner delivery plan and work underway to develop revised partnership plan with sharper focus.</li> </ul>	<ul style="list-style-type: none"> <li>• There is a need to move towards implementation of the policy at pace across partners to realise potential.</li> <li>• For all partners there are internal barriers to change (culture, risk aversion, ties to current systems and processes that will need to be overcome) and some external limitations e.g. national procurement frameworks.</li> <li>• There remains a need for clarity around shared delivery of plan across anchor institutions and accountability via governance arrangements.</li> <li>• Existing systems and processes – both strategic and local - will require to be redesigned to support implementation.</li> <li>• Challenges remain in aligning ambition of CWB with refreshed plans and strategies.</li> <li>• Developing a stronger outcome monitoring framework for CWB which demonstrates the policy objective that more wealth is generated, circulated and retained in Fife and its communities for the benefit of all.</li> </ul>

## Tackling Poverty and Preventing Crisis

### Progress

- An £8m Winter Support Programme was deployed in response to the cost-of-living crisis including emergency help for people in fuel, cash and food crisis, for warm spaces and an expansion of Café Inc.
- New data tools have been procured and are now in place – Low Income Family Tracker and Entitled2 Benefits Checker. These are improving the use of data relating to poverty to target spend on prevention of crisis.
- Training for frontline staff and volunteers in using the benefit checker to ensure people are receiving entitlements.
- The Fife Benefit Checker has identified potential average financial monthly gains of between £154 and £177 per month for those completing a benefit check.
- Benefit campaigns - pension credit, tax free childcare, carers campaign. The Pension Credit campaign, November 2022 – March 2023 resulted in 110 claims totalling £338,988 in unclaimed benefits.
- Working with businesses, voluntary and statutory sectors to address poverty - Big Hoose has supported 22,000 families get the household and essential items they need from repurposing donations from businesses.
- Currently reviewing the delivery plan to focus on fewer improvement projects.

### Challenges

- The Cost of Living crisis is increasing the need for this priority, with the ambition unlikely to be achieved given levels of uncertainty facing people.
- The introduction of the Scottish Child Payment starting to impact on families and increasing their income, but this is against a backdrop of increasing challenges for families to be able to afford essentials.
- While there has been significant support provided for tackling poverty, the funding is not there to sustain this. There needs to be a rebalancing of resources from crisis to prevention.



# Leading Economic Recovery

## Progress

- The new Fife Economic Strategy 2023-2030 was approved by Fife Partnership in August 2023 and sets out Fife's approach to growing a stronger, greener and fairer economy.
- Business Gateway Fife supported a total of 503 business start-ups in 2022-23, creating 702 new jobs and a projected turnover of £17.1m.
- In 2022-23, 41.7% of Fife Council procurement contracts were awarded to Fife businesses (up from 39.7% the previous year).
- 413 successful applications to Fife Council's Net Zero Transition Fund were awarded grants totalling £1.23m.
- The Mid-Fife and Glenrothes area was awarded £19.4m of UK government Levelling-Up funding to grow the economy, create good jobs and spread opportunity.
- £13.4m of UK Shared Prosperity Funding was awarded to Fife to support activities to strengthen climate resilience for communities, the visitor economy and town centres as well as business support services for start-ups and existing businesses.
- A total of 1,429 people participated on employability activities funded or operated by Fife Council in 2022/23, with 60% (858) of participants successfully going on to employment.
- Fife Council's Employability Team supported 103 Modern Apprenticeships across various Services within Fife Council and 146 Foundation Apprenticeships within the Education & Children's Services and Health & Social Care directorates.
- Fife is one of only five Scottish local authorities to have access to Scottish Government Vacant & Derelict Land Funding (VDLF). In 2022-23 Fife Council secured £1.451m of VDLF, which is currently being used to support around 15 initiatives across Fife.

## Challenges

- The context for economic recovery continues to be challenging, with many Fife businesses still facing significant concerns.
- The number of jobs and businesses in Fife both fell in 2021 and 2022, and Fife's jobs density (the number of jobs compared to the working age population in an area) is lower than Scotland as a whole
- Businesses continue to face wage increases and rising fuel and energy costs. Business investment in digitisation in Fife is below the Scottish average, and there are also significant challenges to investment in the transition to net zero in the current economic climate.
- The changing dynamics of high street retail, exacerbated by a decline in disposable income due to the cost-of-living crisis, continues to pose a significant challenge in our town centres.
- There remains a challenging context for improving educational attainment and positive destinations for Fife school leavers.
- Mid-Fife continues to be an area of concern with regard to economic activity, with the number of people claiming out-of-work benefits in Levenmouth, Kirkcaldy and Cowdenbeath remaining consistently higher than the rest of Fife.
- There are uncertainties in relation to the external funding for the longer term, ahead of implementation of the Verity House agreement and in relation to UK government's Levelling Up's approach and associated external funding streams beyond March 2025 when the current UK Shared Prosperity Funding ends, and how future long-term replacement for former European funding streams will be developed.

## Addressing the Climate Emergency

### Progress

- Fife Council's Climate Fife Delivery Plan has been refreshed setting out actions around reducing carbon emissions, greater resilience to climate change, increased community capacity to tackle climate change, and community wealth building.
- A Climate Risk and Vulnerability Assessment has been undertaken identifying priority areas for action.
- Continued development of a comprehensive public sector asset register is ongoing, with the intent of helping to develop a place-based approach to climate action and opportunities for shared facilities use across partners.
- Climate Place project funded by UK Shared Prosperity Fund has established funding for capital works to improve energy efficiency and resilience of community assets. Delivery over 2023/24 and 2024/25.
- Nature Finance Project developing new approach to investment in, and delivery of, biodiversity enhancements. Delivery of seven site enhancements over 2024/25.
- Support for the development of a Community Solar Co-Operative in place with feasibility studies across 11 sites in Fife. Stage two feasibility being undertaken in 2023/24.
- Ongoing Climate Literacy delivery across partner organisations.
- Local Heat and Energy Efficiency Strategy and Delivery Plan developed. Key areas for development include local energy generation/storage and district heat networks, support for Re-Use Hubs, creation of a Fife Climate Forest and support for household at risk of flooding.

### Challenges

- While climate funding opportunities are being maximised, the resources required to deliver Net Zero and ensure a just transition, remain a challenge.
- There is a need to anticipate and plan for the more pressing implications of climate change and how it will affect peoples' lives. A Risk & Vulnerability Assessment has been undertaken and now need to agree partnership wide action on adaptation to climate change across Fife.
- The energy crisis continues to be experienced by households, businesses and organisations throughout Fife and beyond. This brings to the fore the need to reduce demand for energy, as the important first step in reducing carbon emissions.
- Natural Gas is the largest source of emissions and is the largest contributor to the Council's Footprint. Decarbonising heat will be a critical challenge in the coming years and will require substantial additional capital investment. Current alternative solutions primarily use electricity and therefore potentially have increased revenue costs.
- Given budget restrictions anticipated in the coming years, it will be crucial that carbon emissions reductions are considered with all new investments, in creating a new business-as-usual, and that climate is considered throughout the broad range of anchor organisations decisions and investments. There is a continuing need for a coordinated and joined up approach to carbon management across partner's public sector estate and review of capital plans.

### 3. Review of Ambitions

The annual review of progress against the ambitions is not about describing the activity that has been happening but looking at what impact this activity has had on the ambition by reviewing progress with performance indicators aligned to the Plan4Fife. A list of the indicators used in the assessment of progress against each of the ambitions can be found in Appendix 1. There is a need to regularly review the indicators that are actively being used to monitor performance for the Plan4Fife to ensure they remain relevant and fit for purpose. This is a priority for 2024.

Inclusive Growth and Jobs	Progress Against Ambitions
 <p><b>Ambition</b> Economic activity and employment in Fife is improving faster than the rest of Scotland</p>	<p>Fife’s employment rate for the 12 months to March 2023 was 74.1%, the highest level since 2018-19, just below the Scottish rate of 74.7%.</p> <p>Fife’s unemployment rate over the same period rose slightly to 3.9% (only slightly above the record low of 3.7% in 2021-2022), with an estimated 7,000 people unemployed. Fife’s unemployment rate (3.9%) is higher than the figure of 3.5% for Scotland as a whole, although the gap between the two figures is narrower than it was before the Covid-19 pandemic.</p> <p>The average Claimant Rate in Fife for 2022-23 was 3.5%, which is lower than the pre-pandemic figure for Fife of 3.8%.</p> <p>The total number of businesses in Fife has fallen for the third year in succession. It is estimated that in March 2023 there were 920 (9.3%) fewer registered businesses in Fife than in March 2020, with most of the businesses lost classified as micro-businesses employing fewer than 10 employees.</p>
	<p>Mid-Fife continues to be an area of challenge with employment / unemployment rates falling further behind the rest of Fife.</p> <p>Claimant rates in the Levenmouth, Kirkcaldy and Cowdenbeath areas remain consistently higher than in other parts of Fife.</p>
<p>Fife has year-on-year increases in visitor numbers and tourism spend</p>	<p>Tourism in Fife has shown significant improvement, having been one of the sectors worst affected by the economic impact of the Covid-19 pandemic.</p> <p>Total visitor numbers to Fife for 2022 were 2.71m (97% of 2019 pre-Covid levels). The economic impact of tourism in 2022 was £450m, a significant increase from the 2021 figure of £299.6m, and higher than pre-Covid levels.</p>

## Opportunities for All



### Ambition

Fife has lower levels of poverty in line with national targets

Educational attainment continues to improve for all groups

Fife has reduced levels of preventable ill health and premature mortality across all communities

### Progress Against Ambitions

Progress is mixed, with current figures showing children in Fife (aged under 16) living in relative and absolute poverty continues to increase year on year and remains higher than the rest of Scotland.

Although there are signs of improvement around fuel poor households, energy costs continue to be a driver of the cost-of-living crisis.

The percentage of employee jobs in Fife paid less than the real Living Wage has continued to steadily decrease, from 18.9% in 2018-19 to 12.3% in 2021-22.

Outcomes for the key skills of literacy and numeracy are strong, with outcomes exceeding the national average by the end of stage S4 across almost all measures. Outcomes for wider attainment (both by the end of stage S4 and for school leavers) remains an area for improvement, with outcomes trailing national. As across the rest of Scotland, a significant attainment gap exists between the least and most deprived area. The attainment gap in Fife has narrowed for most measures in the past two years.

Over the past two years, the percentage of pupils entering a positive destination has increased. While Fife remains below the Scottish average, the gap with national outcomes is closing.

The longer-term impacts of the Covid-19 pandemic around Health are still being felt and will continue to do so for some time. Life Expectancy for both Males and Females has remained consistent over the last 4 years.

## Thriving Places

### Ambition

Everyone has access to affordable housing options

Fife's main town centres stand out as attractive places to live, work and visit

All our communities benefit from low levels of crime and anti-social behaviour

Every community has access to high quality outdoor, cultural and leisure opportunities

### Progress Against Ambitions

There is mixed progress around this ambition, homelessness figures have remained at the same level since 2013/14 with little improvement. The number of people rough sleeping has significantly increased from 132 in 2019/20 to 205 in 2022/23 with the cost-of-living crisis impacting the community.

While Temporary Accommodation continues to decrease year on year, it continues to operate under significant pressure.

Town centres continue to face significant challenges, with the number of retail vacancies increasing in most of Fife's towns.

Kirkcaldy and Dunfermline remain most impacted and difficult economic conditions are likely to continue.

Overall, this ambition has seen some decline with the number of anti-social behaviour cases and number of crimes recorded increasing over the last two years.

This ambition is still recovering from the effects of the Covid-19 pandemic, attendances in Sport & Leisure and library visits are increasing, with museums still to recover. Satisfaction levels remain consistent.



## Community Led Services



### Ambition

Our public services are more joined up and acting 'one step sooner'

Fife's communities and individuals are more involved in local decision making and in helping to plan and deliver local services

### Progress Against Ambitions

Covid-19 and the cost-of-living crisis have undoubtedly impacted on services across the Council. Increased demand from disadvantaged and vulnerable groups continues to grow and services are required to adapt to the changing needs of communities.

The number of applications for crisis grants continues to increase year on year with 32,597 applications in 2022/23 compared to 31,535 in 2020/21. £2.8 million was allocated from the Scottish Welfare Fund in 2022/23 compared to £2.5 million in 2020/21 reflecting the impact of the pandemic in 2020-21 and more recently the cost-of-living crisis. However, Fife is not alone in this, with the same issues leading to increased demand for support across Scotland.

Fifers agreeing that they could influence decisions in their local area remains above the Scottish average, although there is further scope for local people to get involved in helping to plan and deliver local services.

## Addressing the climate emergency



### Ambition

Fife has lower levels of carbon emissions in line with national targets (75% by 2030 from 1990 baseline).

### Progress Against Ambitions

Fife's emissions indicators reflect a trend of a reducing footprint both for Fife as a whole, and Fife Council's own estate. Fife Council's carbon footprint is on track to achieve Scottish Government targets by 2030.

## 4. Summary

The latest annual report on priorities and ambitions reflects the ongoing and not unexpected challenges that Fife continues to face in recovering from the pandemic and the cost of living crisis.

Through a continued focus on recovery and renewal priorities, Delivery Boards have shown good progress. There has been improved use of data and evidence to target poverty interventions and maximise household incomes. Partners are flexing their power as anchor organisations to re-wire systems and processes to deliver Community Wealth Building: increasing local procurement, increasing recruitment for those facing most barriers, and capturing greater community benefits. In terms of local economic recovery, as well as post-pandemic growth in tourism, external funding has been secured to support businesses, create jobs and opportunities in mid-Fife. The delivery of community climate projects continues to expand, biodiversity enhancement activity underway with grants available to support transition to net zero for businesses in Fife. Good progress is also being made in reducing Fife's carbon footprint.

Across the wider ambitions, while good progress is being made in literacy and numeracy, and in closing the attainment gap, the gap remains between most and least deprived communities. More young people are now going into positive destinations on leaving school. Fewer people are being paid less than the living wage.

Tourism is a success story in terms of economic recovery. Town centres continue to face ongoing challenges. Lower business survival rates reflect the increased costs of doing business arising from a mix of factors (including Brexit, the pandemic and rising energy costs). Sports facilities, culture and leisure are taking time to recover to pre-pandemic levels. Mid-Fife continues to be an area of strategic concern with persistently lower employment and higher unemployment rate relative to other areas of Fife.

Poverty levels remain stubbornly high. Cost of living pressures have increased demand for community food, fuel and crisis support, working against the desire to move to more preventative approaches to tackling poverty before people end up in crisis. Difficult economic circumstances are reflected in increased crime in some communities. Challenges remain around housing and homelessness with temporary accommodation limited and under pressure. Longer term health impacts on local communities continue to be an area of concern.

Despite the challenging social and economic context continuing to hamper improvement efforts, maintaining focus on the recovery and renewal priorities is supporting partners to work collaboratively to make a step change in the areas which will make the biggest difference to achievement of the long-term ambitions set out in the Plan4Fife 2017-2027.

## Appendix 1 – Plan4Fife Indicators

### INCLUSIVE GROWTH & JOBS

Ambition	PI Description
Economic Activity and Employment in Fife is improving faster than the rest of Scotland	New Business Start-ups supported by Business Gateway Fife
	New businesses surviving at least 3 years (%) Fife (P4F)
	New businesses surviving at least 3 years (%) Scotland (P4F)
	Employment Rate (P4F)
	Employment Rate – Scotland
	Unemployment rate (%) Fife (P4F)
	Unemployment rate (%) Scotland
	Claimant Count as a % of Working Age Population (P4F)
	Land immediately available for employment purposes (%) (LGBF)
	Properties receiving superfast broadband (%) (LGBF)
	The number of businesses registered with the Supplier Development Programme
	Number of Businesses participating in Supplier Development Programme
	Economic Activity and Employment in <u>Mid-Fife</u> is catching up with the rest of Fife and Scotland
Mid-Fife unemployment rate	
% of working age people in Mid-Fife claimed out of work benefits	
Fife has year on year increase in visitor numbers and tourism spend	Total Visitor Numbers to Fife (All Visitors) (millions) (P4F)
	Total FTE Employment Supported by Tourism in Fife
	Economic Impact of Tourism in Fife (All Visitors) (£millions) (STEAM)



## Appendix 1 – Plan4Fife Indicators

### OPPORTUNITIES FOR ALL

Ambition	PI Description
Fife has lower levels of poverty in line with national targets	Median Weekly workplace Earning - Fife(P4F)
	Median Weekly Resident Earnings - Fife(P4F)
	Median Weekly Earnings - Work in Scotland (P4F)
	People earning less than the living wage (%) (LGBF)
	% of children living in low-income households (DWP) Relative poverty
	% of children living in low-income households (DWP) Absolute poverty
	Fuel Poor Households in Fife (%) (SHCS)
	Fuel Poor Households in Scotland (%) (SHCS)
	Extreme Fuel Poor Households in Fife (%) (SHCS)
	Extreme Fuel Poor Households in Scotland (%) (Scottish House Condition Survey)
	Percentage of children with one or more concerns at 27-30 month child health review (Fife) (P4F)
	% of children meeting developmental milestones at their 27-30 month review (LGBF)
	% Child Protection Re-Registrations within 18 months (LGBF)
Educational Attainment continues to improve for all groups	Gap in attendance between SIMD most deprived 20% and all primary schools
	Gap in attendance between SIMD most deprived 20% and all secondary schools
	% of P1, P4 and P7 pupils combined achieving expected CFE Level in Literacy
	% of P1, P4 and P7 pupils combined achieving expected CFE Level in Numeracy
	% of young people achieving Literacy at SCQF level 5 by the end of stage S4
	% of young people achieving Numeracy at SCQF level 5 by the end of stage S4
	% of pupils entering positive destinations (LGBF)
Percentage of school leavers entering a positive destination (most deprived) (P4F)	
Fife has reduced levels of preventable ill health and premature mortality across all communities	Life expectancy, females (Fife)
	Life expectancy, females (Scotland)
	Life expectancy, Males (Fife)
	Life expectancy, Males (Scotland)
	All-cause premature mortality rate - under 75 (Fife)

## Appendix 1 – Plan4Fife Indicators

THRIVING PLACES	
Ambition	PI Description
<b>Fife's main town centres stand out as attractive to live, work and visit</b>	Retail vacancy rate (%) Kirkcaldy
	Retail vacancy rate (%) Leven
	Retail vacancy rate (%) Dunfermline
	Retail vacancy rate (%) Glenrothes
	Retail vacancy rate (%) Cowdenbeath
	Retail vacancy rate (%) St Andrews
<b>Every Community has access to high quality outdoor, cultural and leisure opportunities</b>	Male participation in physical activity
	Female participation in physical activity
	Adults satisfied with museums and galleries (%) (LGBF)
	Adults satisfied with parks and open spaces (%) (LGBF)
	Adults satisfied with leisure facilities (%) (LGBF)
	Number of attendances at ALL outdoor sport and leisure facilities (SPI)
	Number of Library visits (SPI) - Physical and Virtual Visits
	OnFife Theatres visitor numbers
<b>All our communities benefit from low levels of crime and anti-social behaviour</b>	The number of visits to/usages of council funded or part funded museums Fife (LGBF)
	Recorded group 1-4 crimes recorded by Police Scotland - Fife Division
	Anti-social behaviour cases reported in the last year resolved timeously (%)
	Number of anti-social behaviour cases reported in the last year
	Number of anti-social behaviour cases resolved in the last year
<b>Everyone has access to affordable housing options</b>	Perception of prevalence of neighbourhood problems: vandalism, graffiti or other deliberate damage to property (Fife)
	Number of children experiencing homelessness residing in temporary accommodation at year end
	% occupancy in temporary accommodation
	Number of people rough sleeping
	Number of Housing Option Plans completed via the FHR Website
	Number of affordable housing units delivered Fife
Cumulative no. of affordable housing units delivered Fife	

## Appendix 1 – Plan4Fife Indicators

	No. of households homeless/potentially homeless Fife
	Homeless allocations - Fife (%)
	New tenancies sustained for more than a year (%)

### COMMUNITY – LED SERVICES

Ambition	PI Description
<p>Our public services are more joined up and acting 'one step sooner'</p> <p>Fife's communities and individuals are more involved in local decision making and in helping to plan and deliver local services</p>	Number of applications for crisis grants
	% agreeing that council services are designed for needs
	% of people aged 65+ with high levels of care needs who are cared for at home
	% agreeing that they can influence decisions (Scottish Household Survey)
	% agreeing that they can influence decisions 20% most deprived Fife (Scottish Household Survey)

### ADDRESSING THE CLIMATE EMERGENCY

Ambition	PI Description
<p>Fife has lower levels of carbon emissions in line with national targets</p>	CO <sub>2</sub> emissions area wide: within scope of LA per capita (LGBF)
	Area Wide Emissions (thousand tonnes of Carbon)
	Total Fife Council Carbon Footprint - tCO <sub>2</sub> e