

Glenrothes Area Surveys' Analysis 2022

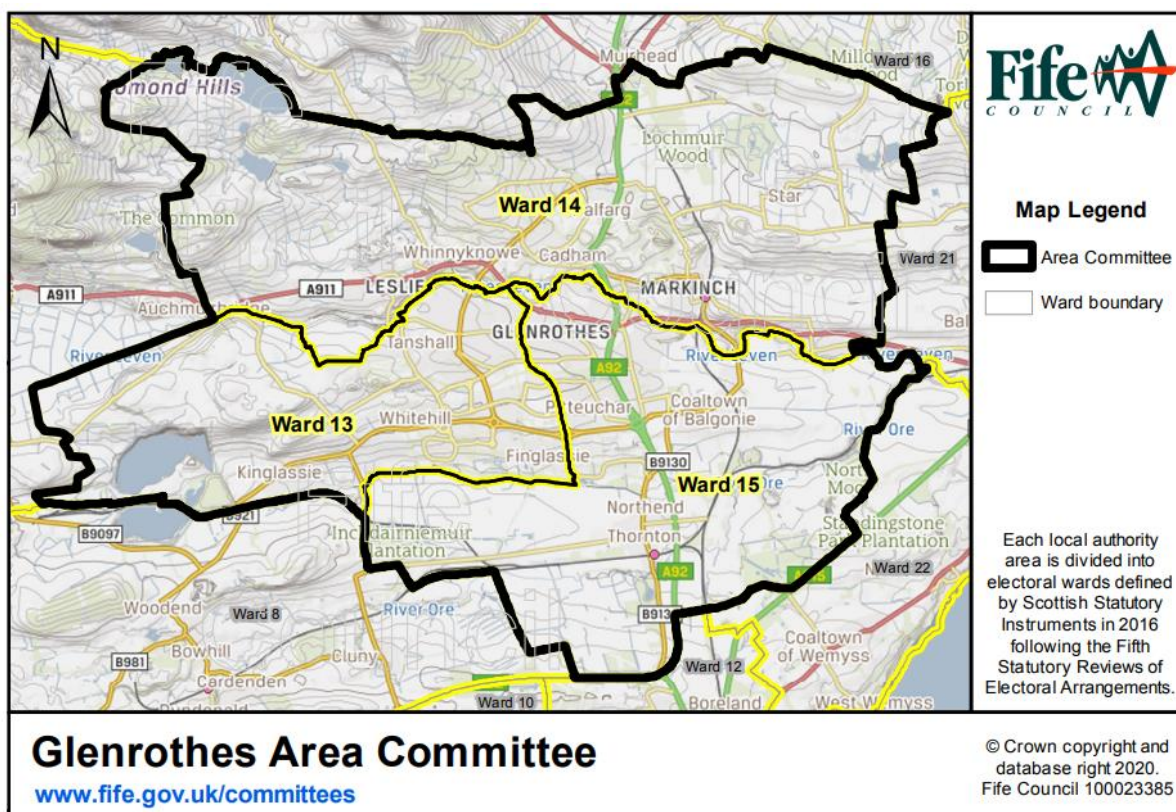
Please click on the survey analysis you are interested in below:

- [Have Your say on the future of Fife's places analysis](#)
- [Disabled persons and place survey analysis](#)
- [Businesses & organisations survey analysis](#)

If you'd like to comment on this analysis email Fife Council at Fife.Devplan@Fife.gov.uk by **midnight 29th November 2023** or write to:

Policy & Place Team
Planning Service
Fife Council
Fife House West
North Street
Glenrothes
KY75LT

We would appreciate it if you would provide the name of the survey and town/village/location on which you are commenting on in your response, thank you.

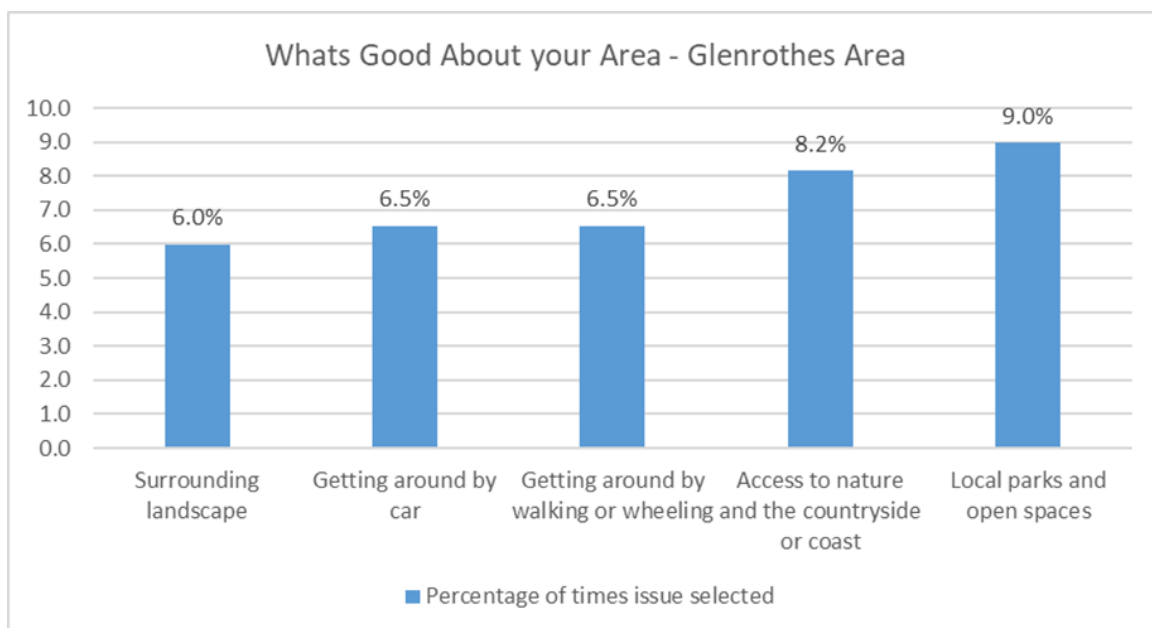


Have your say on the future of Fife's places survey analysis - Glenrothes Area 2022

In 2022 we asked you what you thought was good and bad about where you live and the challenges these places face due to things such as the climate emergency and food resilience. The online survey provided an opportunity for people to have their say in helping shape where they live by highlighting the issues that they think need to be tackled by the next Local Development Plan for Fife.

1.0 What's good about your area

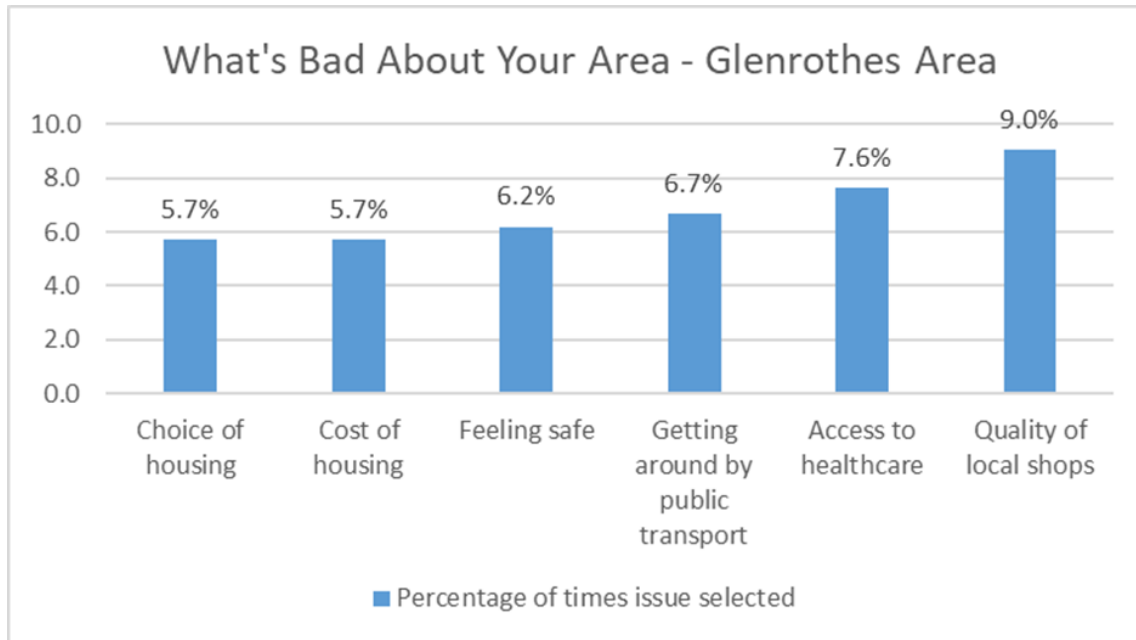
Figure 1 – What's good about your area?



Green and Blue Networks are seen as a good aspect of the Glenrothes Area with 'Local Parks and Open Spaces' (9%) and 'Access to Nature and the Countryside or Coast' (8.2%) chosen as the top 2. Movement around Glenrothes was also seen as good as 'Getting Around by Walking or Wheeling' (6.5%) and 'Getting Around by Car' (6.5%) were highlighted. Respondents mentioned that Glenrothes is a very walkable town with good close access to Lomond Hills Regional Park

2.0 What's bad about your area

Figure 2 – What's bad about your area?

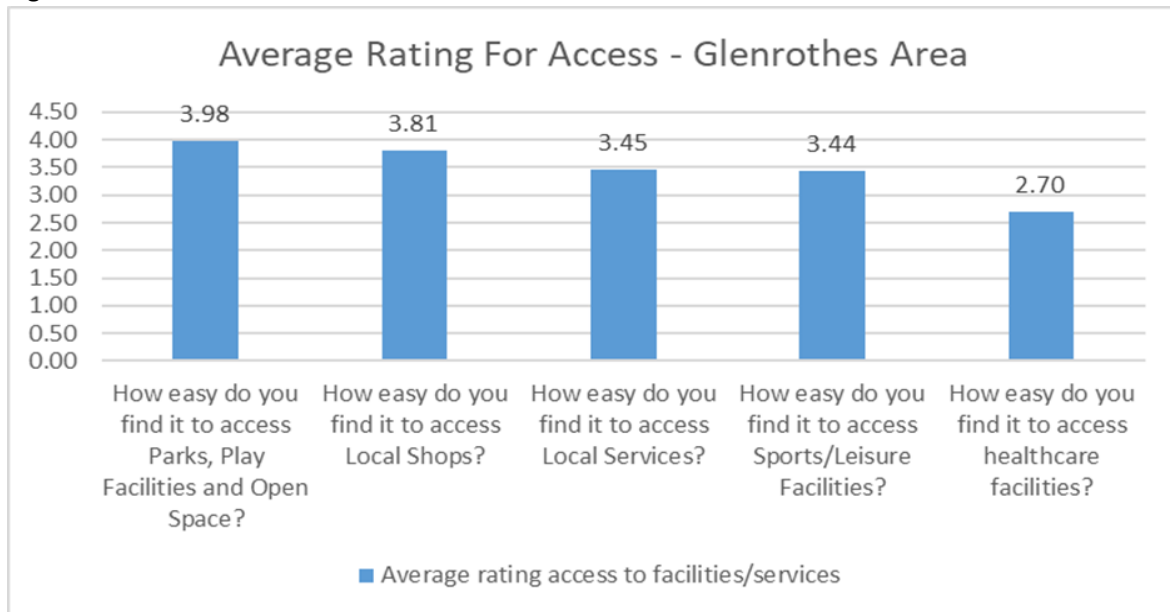


The quality of local shops was seen as bad by some respondents (9%). Getting around by public transport was also seen as an issue with 6.7%. Cost of housing and choice of housing were also mentioned (5.7%). Some respondents mention that they don't feel safe due to a lack of lighting and close proximity to major roads on cycle and pedestrians' paths such as the A92.

3.0 Access

We asked you how easy it is for you to access local services and facilities in your area based on how easy it is to travel to the facility or service taking into account things like opening times, ease of getting appointments etc.

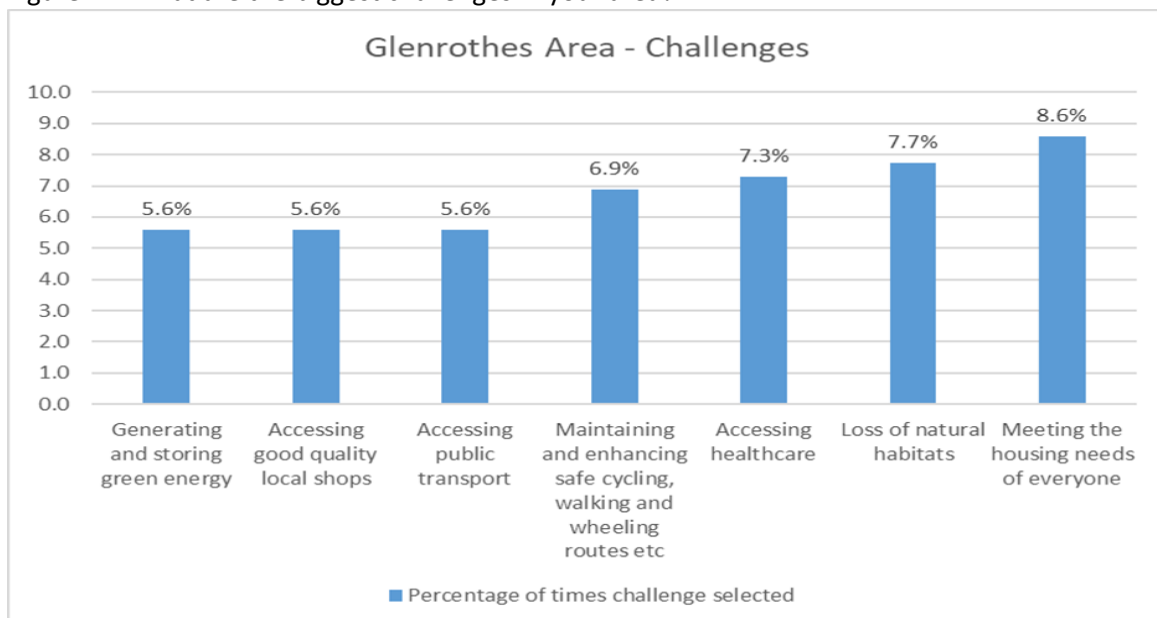
Figure 3 – Access



Access to Parks, Play Facilities and Open Space is seen as the best accessibility in the Glenrothes area by respondents with an average rating of 3.98. Access to the local shops was also seen as good with an average rating of 3.81. Healthcare facilities access was seen as being relatively poor with an average rating of 2.7.

4.0 Challenges

Figure 4 – What are the biggest challenges in your area?



Meeting the housing needs of everyone was seen as the biggest challenge with 8.6%. Loss of Natural Habitat is also seen as a challenge with 7.7%.

Feedback indicated that Fife should focus on rewilding projects and letting open spaces grow beyond just frass lawns. Respondents also said that housing plans did not reflect the current area anymore

and had become less affordable. One person stated that Glenrothes is poorly served by rail network, having to commute out to either Markinch or Thornton.

Fife Local Development Plan - Disabled Persons and Place Online Survey (2022) Analysis – Glenrothes Area

The survey was carried out late 2022 and aimed at finding out about the issues facing disabled persons in relation to where they live and the places they visit. We wanted to know how people find access to things like local shops, sports/leisure facilities, parks etc and what they think can be done to make these places more accessible for everyone. We also wanted to hear about the challenges facing where people live which could be things like the climate emergency or future access to public transport.

1.0 Where you live

Q1 Where do you enjoy going when out and about?

The places people tend to go are typically for leisure activities such as parks, shopping, restaurants and cafes as well as other places in Fife including St Andrews and Dunfermline. Accessibility in these places is generally considered as good.

Q2 Are there places you would like to go but haven't been able to due to access issues?

Typically, the places people have difficulty accessing or haven't been able to visit at all are some shops, particularly older smaller ones.

Some people mentioned that there was nothing to do in the Glenrothes area.

Q3 How easy do you find it to get around where you live by walking and/or wheeling?

People stated that they find it difficult to get around sometimes due to a lack of lowered kerbs and a lack of wheelchair friendly paths throughout the area. That being said, some find it easy to get around walking and wheeling.

Specifically, Waulkmill, Doubledykes and Tullybreck is being closed due to the Levenmouth rail link affecting peoples' our rights.

Q4 What improvements could be made to improve walking and/or wheeling routes in your area?

Improving the condition and connectivity of the path network, including making them disabled friendly was suggested as an improvement. More dropped kerbs would also remove barriers to active travel for those with disabilities.

Cars parking on and across paths was also raised as an issue.

Keeping rights of way open would improve walking and wheeling.

Q5 How easy do you find it to access local shops and services? For example, grocers, hairdressers, council offices, libraries, restaurants etc.

There was a mixed response to this question with some finding it very easy and others extremely difficult depending on various factors.

Most places try to be more accessible but often unseen disabilities such as sensory impairment are not considered.

Corner shops are often too small for wheelchairs and others who use aids to get around.

Poor housing suitability was raised as an issue in the area.

Q6 What improvements could be made to improve access to local shops and services?

Making buildings more accessible, including for those with hidden disabilities, and improving paths and roads could remove barriers to access to local services and shops.

More disabled parking at electric vehicle charging points is required and better more strategically located disabled parking at places such as the Kingdom shopping Centre.

More resources and funding for supporting those with a need.

Better paths and active travel routes connecting to the services and shops.

Q7 How easy do you find it to access parks, green space and countryside?

There were mixed views on how easy it is to access parks, green space and countryside is relatively easy, however a few did have difficulties.

Whilst the countryside was relatively easy to access there were a few comments from residents in Glenrothes itself stating that there's little to no accessible parks in their area. One of the parks hasn't been upgraded for 30 years.

Q8 What improvements could be made to improve access to parks, green space and countryside?

Better pavements and appropriate access points etc could encourage more use of these places.

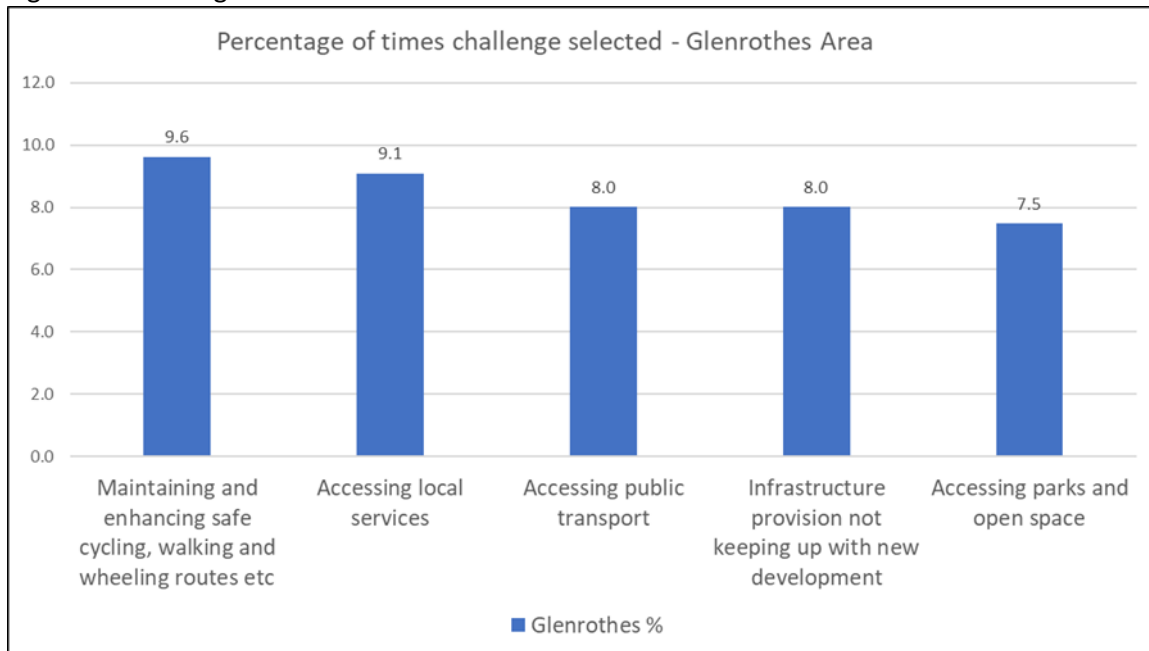
Provide wheelchair accessible equipment in parks incl. play parks for children in wheelchairs.

One respondent stated that Fife Council should focus on one area and look at the other areas close to housing. It should also clean-up Stenton Pond, fix the seats, sort drainage and fix the burnt-out table as it has been like that since 1997.

2.0 Challenges

What do you consider to be the biggest challenges facing where you live?

Figure 1 - Challenges



Please comment further on what you consider to be the biggest challenges facing where you live

Very few disabled play areas available for children in the area.

How can the council say it wants more people to walk and cycle and enjoy the countryside when it is happy to close old well used routes with no consultation with the surrounding communities, when asked to explain themselves they hide behind keyboards rather than face up to their actions, they need to listen to the communities that live in the surrounding area, we all now need to use buses or cars to commute between villages, creating more pollution, good one Fife Council.

Better policing of misbehaving youths from all areas now free bus passes are seeing large groups of teenagers moving area to area with drink and drugs and vandalism being seen regularly

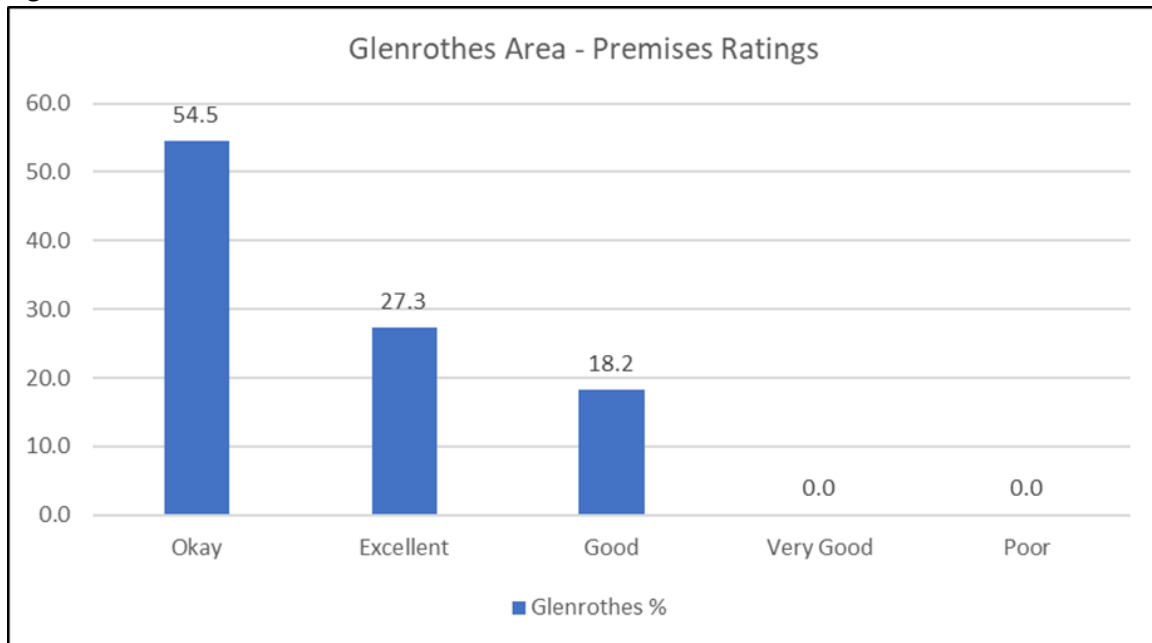
House building needs more service like doctors, schools and better transport.

Fife Local Development Plan - Businesses and Organisations Survey Analysis – Glenrothes Area 2022

This consultation was carried out late 2022 and gathered views on important issues like the local economy, modern business properties, availability of employment land to develop and renewable energy. We also asked for views on key future challenges for Fife.

1.0 How would you rate your premises?

Figure 1 - Premises



All respondents rated their premises as either okay, good or excellent.

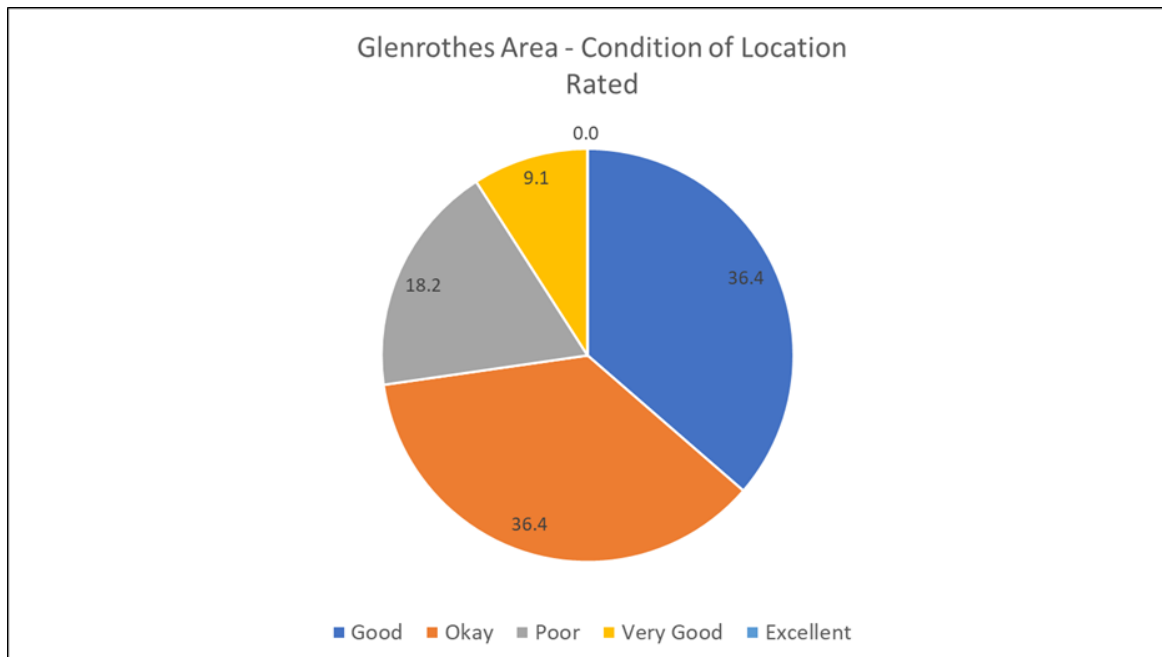
2.0 Please tell us what is good and/or bad about your premises.

Pentland Park in Glenrothes was thought to have good car parking provision, large offices and good amenities.

Some of the comments highlight issues with old building stock that is costly to upgrade to modern standards. It was suggested that old stock is an issue in Southfield Industrial Estate located in Glenrothes.

3.0 How would you describe the condition of the Industrial Estate/Business Park/town centre/other location your business/organisation is based?

Figure 2 – Condition of Premises



Most of the respondents in the Glenrothes Area were based within industrial estates in Glenrothes and the condition of location appear to be relatively positive (81.9%), however a significant percentage of respondents consider them to be poor (18.2%).

Queensway Industrial Estate was highlighted as being in a good location, however one respondent did say they were thought in a poor position but perhaps that relates to their location within the estate.

4.0 Please tell us what is good and/or bad about the Industrial Estate/Business Park/town centre/other location your business/organisation is based.

One respondent stated that Leslie is a developing business community.

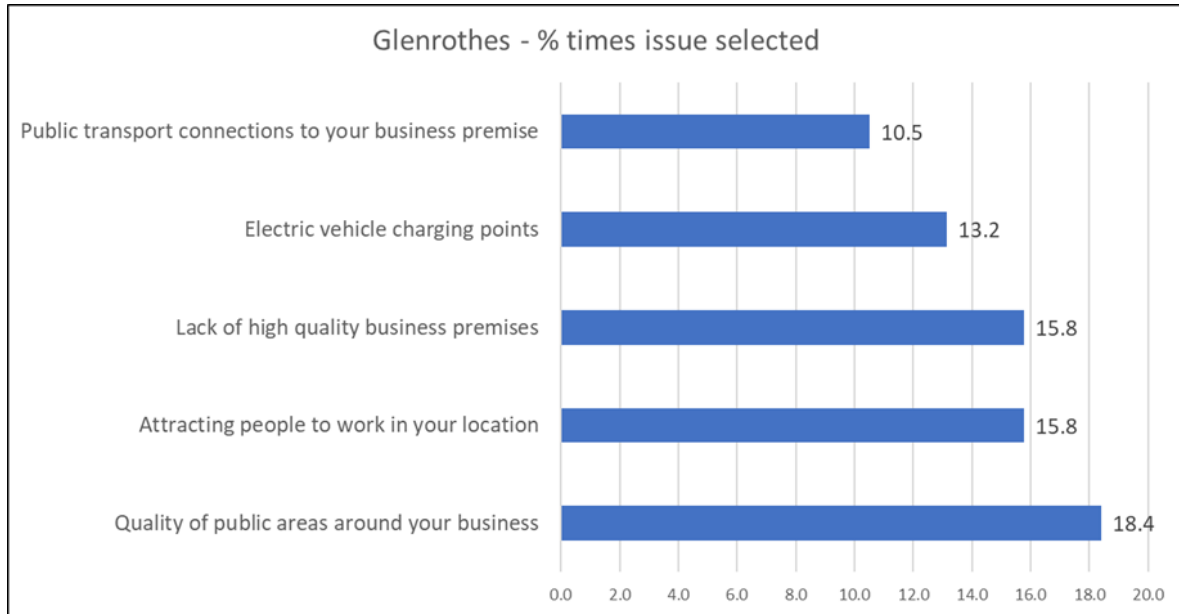
The appearance of some of the industrial estates are described as tired and ugly and it was suggested that industrial estate infrastructure is not well maintained by Fife Council.

Creating footfall at some of industrial estates is seen as a problem.

Poor signage indicating which businesses and organisations are located at Pentland Park was specifically mentioned.

5.0 What issues do you want the next Local Development Plan to look at?

Figurer 3 – Biggest challenges



The 5 biggest issues facing the business and organisations in the Glenrothes Area are the quality of public areas around businesses and organisations, attracting people to work, the lack of high-quality business premises, the provision for electric vehicle charging points and public transport connections to employment locations.

6.0 Please tell us about any other issues not listed above that you want the next Local Development Plan to look at.

It was suggested that planning conditions must be enforced more rigorously to create a Fife everyone can be proud of.

The condition of industrial estates and business parks needs to be a focus of investment.

More affordable land being available would help with business expansion.