



# Glenrothes Area Transport Plan 2024-34

Fair, sustainable access for all



## Table of Contents

Table of Contents .....	1
Glenrothes Area Transport Plan 2024-34 .....	3
Introduction .....	3
The Area.....	3
Contents of the Plan .....	4
Transport & Travel - Glenrothes 'Information Guide' .....	5
Active Travel - Walking, wheeling and cycling.....	5
Public Transport – Buses, rail and community transport services .....	5
Traffic & Parking – Car Parks and Parking Support .....	6
Maintenance & Reporting – Roads and Footways .....	6
Maintenance & Reporting – Street Lighting .....	7
Road and Pavement Safety.....	7
Looking after our Communities – Safer Communities.....	7
Place Development – Living well locally .....	8
Community Say – Get Involved.....	8
Local Interest - Community and Tourist resources .....	8
Glenrothes Area Transport Plan Objectives – Community Priorities.....	9
Glenrothes Area Transport Plan - Action Plan .....	11
Introduction .....	11
Option Identification .....	11
Option Appraisal .....	12
Place Diagram .....	13
Place Priorities .....	14
Glenrothes Town and Surrounding Villages – Common Actions .....	15
Glenrothes Town - Place Specific Actions .....	16
Glenrothes West (Ward 13) - including the neighbourhoods of, Caskieberran, Finglassie, Macedonia, Newcastle, Ribleton, South Parks and Tanshall .....	16
Glenrothes North (Ward 14) - including the neighbourhoods of, Balgeddie, Balfarg, Collydean, Coul, Foresters Lodge, Formonthills, Pitcairn and Pitcoudie .....	18
Glenrothes Central (Ward 15) - including the neighbourhoods of, Alburne Park, Auchmuty, Pitteuchar, Stenton, Town Centre, Warout and Woodside.....	20
Glenrothes Area Villages - Place Specific Actions .....	22
Kinglassie (Ward 13).....	22
Leslie (Ward 14) .....	23
Markinch (Ward 14).....	24

Milton of Balgonie ( Ward 14) .....	25
Star (Ward 14) .....	26
Coaltown of Balgonie ( Ward 15).....	27
Thornton ( Ward 15).....	28
Strategic Transport Routes and Services .....	29
Active Travel:.....	29
Public Transport.....	29
Traffic & Parking.....	29
Lead Delivery Organisations Information.....	29
Funding and Delivery.....	31
Monitoring.....	32

# Glenrothes Area Transport Plan 2024-34

## Introduction

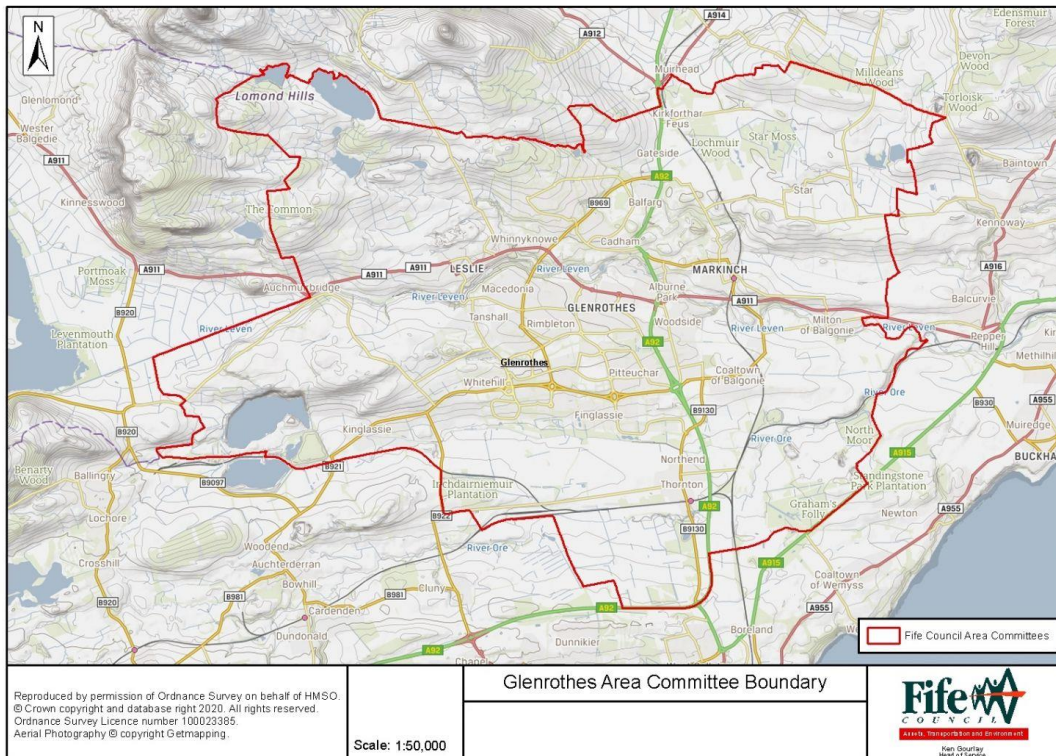
The Glenrothes Area Transport Plan has been shaped by communities and Fife Council Roads & Transportation with other Council Services. The plan has been developed in consultation with the public and partners to improve transport in the area to support the vision of fair and sustainable access for all with a place-based focus, subject to funding.

## The Area

The Glenrothes area has around 50,000 residents, including the new town of Glenrothes and surrounding villages.

The Glenrothes Area covers the communities of:

- Glenrothes west - including, Caskieberran, Finglassie, Macedonia, Newcastle, Rimpleton, South Parks, Tanshall
- Glenrothes north - including, Balgeddie, Balfarg, Collydean, Coul, Foresters Lodge, Formonthills, Pitcairn, Pitcoudie
- Glenrothes central - including, Alburne Park, Auchmuty, Pitteuchar, Stenton, Town Centre, Warout, Woodside
- Kinglassie
- Leslie
- Markinch
- Milton of Balgonie
- Star
- Coaltown of Balgonie
- Thornton



## Contents of the Plan

The Glenrothes Area Transport Plan contains an **Information Guide** to assist communities to see transport opportunities that are available in the area and navigate to report transport issues that they see and experience at any time back to Fife Council. It also contains an **Action Plan** to improve connectivity to enhance local places based on community input, subject to funding and agreements.

The community had been consulted on priorities for improvement in 2024 and the **results of public survey** are contained in this plan.

The Action Plan 2024-2034 includes a series of **proposals to improve active travel, public transport and traffic & parking** that aim to meet objectives that align with community priorities and the Fife Local Transport Strategy. Proposals will be subject to delivery constraints and may require the support of several partners but each case a route to delivery has been identified with a deliver lead organisation.

The plan is backed by an extensive data and document review, including neighbourhood plans, and has been designed to support the objectives of the Local Transport Strategy for Fife 2023-2033. An issues and objectives consultation paper were published on 15th January 2024.

The Glenrothes Area Transport Plan is part of higher level national and regional transport strategies. Fife's Local Transport Strategy 2023-2033 sets out the strategic objectives with the following priorities:

- Fair access to daily activities
- Safe and secure travel for all
- Just transition to net zero
- Transport network resilience

[https://www.fife.gov.uk/data/assets/pdf\\_file/0020/450155/Local-Transport-Strategy-for-Fife-2023-2033.pdf](https://www.fife.gov.uk/data/assets/pdf_file/0020/450155/Local-Transport-Strategy-for-Fife-2023-2033.pdf)

The Area Transport Plan aligns with the **Local Community Plan**, which has a focus on:

- Opportunities for all - Mental Health, Tackling Poverty
- Thriving Places – The Town Centre, Glenwood Centre, Riverside Park
- Inclusive Growth and Jobs – Employment, Improve Town Centre
- Community Led Services – Participation, Community Involvement

Area Transport Plan actions may be adjusted if local community plan priorities change.

The timeline for the Area Transport Plan is a ten-year plan timeframe. Government policies may change but currently the following legislation is being planned for:

- Pavement Parking Ban, Transport (Scotland) Act 2023/2024
- Sales ban on new petrol or diesel cars and vans in 2035

## Transport & Travel - Glenrothes 'Information Guide'

### Active Travel - Walking, wheeling and cycling

For general information on active travel, such as routes available, getting started, support organisations, etc, please visit [www.travelfife.com](http://www.travelfife.com)

For information on our current Active Travel infrastructure projects visit [www.fife.gov.uk/active-travel](http://www.fife.gov.uk/active-travel) or email: [activetravel@fife.gov.uk](mailto:activetravel@fife.gov.uk)

We will also be commencing an updated regime for inspecting and maintaining walking, wheeling and cycling infrastructure. A programme of accessibility audits is also being developed on key walking and wheeling routes.

Routes through Parks are maintained by Parks and green spaces <https://www.fife.gov.uk/kb/docs/articles/community-life2/parks,-allotments,-core-paths>

In addition, Fife Council has a Core Paths Plan that provides access throughout the area.

The Fife Coast & Countryside Trust also maintain country walks for you throughout Fife. <https://fifecoastandcountryside.co.uk/>

We all want “**a healthier and more active Fife where everyone can enjoy and experience the benefits of being more physically active**”. Initiatives have been developed to encourage this by Active Fife. <https://active.fife.scot/about/active-fife>

### Public Transport – Buses, rail and community transport services

Alongside our supported bus services, we provide **Go-Flexi** and **Fife Bus**, which provide on-demand bus services for some rural areas and for people who are not able to access mainstream passenger transport.

We also provide the **MyFife National Entitlement Card** which offers a range of concessionary travel schemes for people in Fife.

We want everyone to be able to access bus travel in Fife, and to know exactly what routes they can travel. The Council, in partnership with others have created our **Journey Planning Map**. This interactive map allows you to plan your journeys ahead of time.

For more information, visit the [Travel Fife](http://Travel Fife) website or email [travel.fife@fife.gov.uk](mailto:travel.fife@fife.gov.uk)

Supported bus services reviews are undertaken regularly, based on customer surveys and feedback. There is a commitment to investigate bus service options contained within the Transport (Scotland) Act 2019, in particular the feasibility of local authority-run buses.

## Traffic & Parking – Car Parks and Parking Support

Details of all parking charges for the various parking places within Fife can be found on the [Car Parking Charges](#) web page. If there is a fault with a Pay & Display machine, please use another machine within the car park. If you are unable to obtain a ticket, you must contact the parking supervisor prior to leaving your vehicle on 03451 551507.

Blue badge holders and motorcycles are free to park in any of our spaces without the need to purchase a ticket. For further information take a look at our [Blue Badge](#) page.

For more information visit the parking web pages.

<https://www.fife.gov.uk/kb/docs/articles/roads,-travel-and-parking/parking-and-car-parks>

There is a commitment to review the Fife Parking Strategy.

## Maintenance & Reporting – Roads and Footways

You can notify us of any road problems by using our **online Road Reporting Form**. You can call us on 03451 55 00 11 from Monday to Friday, 8am to 6pm. In the event of an emergency, after 6pm, or at the weekend, please call 03451 55 00 99.

Please note that the Council are not responsible for the maintenance of the trunk road network (A92 and motorways). You can report defects to the Traffic Scotland Customer Care Line on 0800 028 1414.

We will also be developing a climate change adaptation action plan, setting out our approach to protecting the transport network from the effects of extreme weather. Winter maintenance including gritting information is undertaken on a priority basis.

<https://www.fife.gov.uk/kb/docs/articles/roads,-travel-and-parking/roads-and-pavements/road-maintenance/roads-and-gritting>

Road maintenance is carried out on a risk-based approach related to severity of carriageway defects and type of road. A programme of planned road improvements is detailed in the annual Area Roads Programme.

<https://www.fife.gov.uk/kb/docs/articles/roads,-travel-and-parking/roads-and-pavements/area-roads-programme>

## Maintenance & Reporting – Street Lighting

There are over 68,000 streetlights keeping 100 towns, villages, and major road junctions well lit across Fife.

Transportation Services are responsible for the repair of all street lighting faults. You can use a form to report non-emergency faults with streetlights, illuminated signs/bollards and permanent traffic signals.

<https://www.fife.gov.uk/services/form-pages/report-a-streetlight-fault>

## Road and Pavement Safety

We want to keep the people of Fife safe on the roads. School Travel Plans and Bikeability Cycle Training are contributing to road safety for our kids.

<https://www.fife.gov.uk/kb/docs/articles/roads,-travel-and-parking/roads-and-pavements/safety> or email: [school.travelplans@fife.gov.uk](mailto:school.travelplans@fife.gov.uk)

The Footway Parking Bill (Transport Scotland Act, 2019) was enacted on 11th December 2023. Fife Council is progressing with the detail of how the new powers could be implemented. If the Council agrees to adopt the statutory powers, then Parking Attendants would be able to take enforceable action against vehicles parking on pavements, over dropped kerbs and which are double parked (excluding areas which have exemptions).

There is a commitment to review the Fife Council policy on speed limits, considering the emerging National Strategy for 20mph.

## Looking after our Communities – Safer Communities

Fife Council's Safer Communities team works to deliver community safety across Fife.

Community safety covers a range of issues including crime, antisocial behaviour, public perception of crime and safety in our homes and on our roads and to improve the local environment,

<https://www.fife.gov.uk/kb/docs/articles/community-life2/safer-communities>



## Place Development – Living well locally

Living Well locally is the idea of connected communities, where people can meet the majority of their daily needs within a reasonable walk, wheel, cycle or short trip of their home. Measures to support living locally have been a consideration in this plan such as improvements to active travel, public transport and traffic & parking. These elements contribute to a nationally recognised local living framework and can be measured by a place standard tool used in community planning.

Any questions about Living Well Locally can be sent through by email to [fife.devplan@fife.gov.uk](mailto:fife.devplan@fife.gov.uk)

Planning service information can be found at:

<https://www.fife.gov.uk/kb/docs/articles/planning-and-building2/planning>

## Community Say – Get Involved

Here you'll find links to information and advice about what's going on in Fife today as well as how we can all work together to improve our community.

<https://our.fife.scot/>

The Local Community Plan, and other information about Glenrothes can be found on the local area pages.

<https://our.fife.scot/lets-talk-local/glenrothes-area>

## Local Interest - Community and Tourist resources

Glenrothes Town Art Trail

<https://storymaps.arcgis.com/stories/dac4cb5070a046baaa7402fbd528f554>

Glenrothes as a destination

<https://www.welcometofife.com/destination/glenrothes>

## Glenrothes Area Transport Plan Objectives – Community Priorities

Further to community consultation held in January and February 2024 the area transport plan objectives had the following support, with a combined strongly agree or agree levels shown [ 265 responses 26/2/2024]. The community responses validate earlier consultations and have helped shape the action plan.

Moving Around (Active Travel – Walking ,Wheeling and Cycling):

AT1: Encourage travel to everyday activities by more walking, wheeling and cycling (78%)

AT2: Improve walking and wheeling accessibility in towns and villages (83%)

AT3: Improve people’s feeling of safety when walking and wheeling or cycling (94%)

AT4: Work to meet demand for new walking and wheeling or cycling routes (79%)

AT5: Maintain active travel facilities condition and availability.(92%)

Public Transport (Bus and Train travel)

PT1: Work with partners to increase access to key daily activities by public transport (92%)

PT2: Work with partners to increase the affordability and attractiveness of bus travel (92%)

PT3: Increase bus infrastructure, that meets modern accessibility standards (91%)

PT4: Maintain public transport infrastructure condition and availability (90%)

Traffic & Parking (Cars and Commercial vehicles)

T&P1: Work with partners to reduce road deaths and serious injuries (94%)

T&P2: Enable the fair roll-out of electric vehicle charging infrastructure (54%)

T&P3: Retain current transport network road condition and availability (74%)

Updated T&P3: Maintain the current road network and retain availability

Of those disagreeing with T&P3 half wanted “Improvement” rather than retaining the current transport network road condition and availability therefore the objective has been reworded to indicate on-going maintenance rather than retaining defects.

Updated T&P3: Maintain the current road network and retain availability

A synopsis of top themes of written feedback from the Jan –Feb 2024 public consultation is contained in the Tables below.

### Active Travel

- Improve maintenance of existing active travel routes.
- Improve street lighting on active travel routes.
- Signalise Bankhead roundabout including pedestrian phases.
- Stop vehicles parking on active travel routes.
- Retain access to Rights of Way and core path routes.
- Active travel routes should be more disabled friendly with dropped kerbs for mobility scooter and wheelchair access.
- Improve winter maintenance on active travel routes with higher priority gritting and snow clearing.
- Provide seating next to active travel routes for allow users to take breaks.

### Public Transport

- Bus Operators to improve the reliability of their bus fleet
- Bus Operators need to keep to scheduled timetables.
- Bus and Rail fares need to be more affordable.
- Improve integration of timetables for bus and train services.
- Bus Operators to reduce the cancelling of scheduled services
- Bus Operators consider providing express services via Thornton

### Traffic & Parking

- Road network condition needs to be improved not just kept at its current standard.
- Pavement parking needs to be banned and enforced.
- Provide more parking spaces in residential areas to prevent illicit parking on footpaths and grass areas.
- Improve the quality of street lighting.

# Glenrothes Area Transport Plan - Action Plan

## Introduction

The following action plan is set out by Glenrothes town ward area or settlement to focus in on local communities and places. See the map to view planned actions in each area. The detail of the actions is show in the Action Plan tables. Some measures cross ward boundaries and therefore appear in several tables.

Implementation will be subject to available resources, but an approximate timeframe has been given for delivery of measures based on the following criteria:

- Short term 2024-2026,
- Medium term 2026-2030,
- Long term 2030-2034 and beyond

Measures may be undertaken by Fife Council, partners or private developers, and an indication of the delivery lead owner of the measures has been given in the Action Plan tables. The following organisations have been identified as leading interventions:

- AT Fife Council Active Travel
- TP Fife Council Travel Planning
- Parking Fife Council Parking
- PT Fife Council Passenger Transport
- RNM Fife Council Roads Network Management
- Structures Fife Council Structural Services
- GM Fife Council Grounds Maintenance
- TCED Fife Council Town Centre Economic Development
- Planning Fife Council Planning Service
- CN Fife Council Communities & Neighbourhoods
- FBP Fife Bus Partnership ( 6 partners)
- LP The Leven Programme (11 partners) & LUF
- FCCT Fife Coast & Countryside Trust
- TS Transport Scotland
- Sustrans Charity
- Developer Private Developer

Further information about lead organisations is contained at the end of this section.

## Option Identification

Option identification and development has been undertaken from existing sources, such as Neighbourhood plans, community feedback, engagement with Schools, Local Development Plan Strategic Transport Assessments, Bus Priority Studies, emerging Active Travel Strategy network development, approved planning agreements and third-party operations with an involvement in the Glenrothes area. Options were not restricted to council funded projects as the Council does the best it can with the resources that it has available but only by partnering and seeking support from other organisations will there be major transport improvements.

Public feedback has indicated that the council should focus on its core obligations, and to this end the business and usual elements of maintaining and looking after communities' local transport facilities and services have been reflected in common actions applicable to all places. These have been enhanced by initiatives to better check that basic facilities are being maintained and are to an acceptable accessibility standard.

These common actions are the core functions that support movement in and around communities, and is so doing supporting positive Mental Health, Tackling Poverty, supporting the Town Centre, and other regeneration projects, access to Employment, and allow mechanisms for Participation and Community Involvement linking to the Local Community Plan.

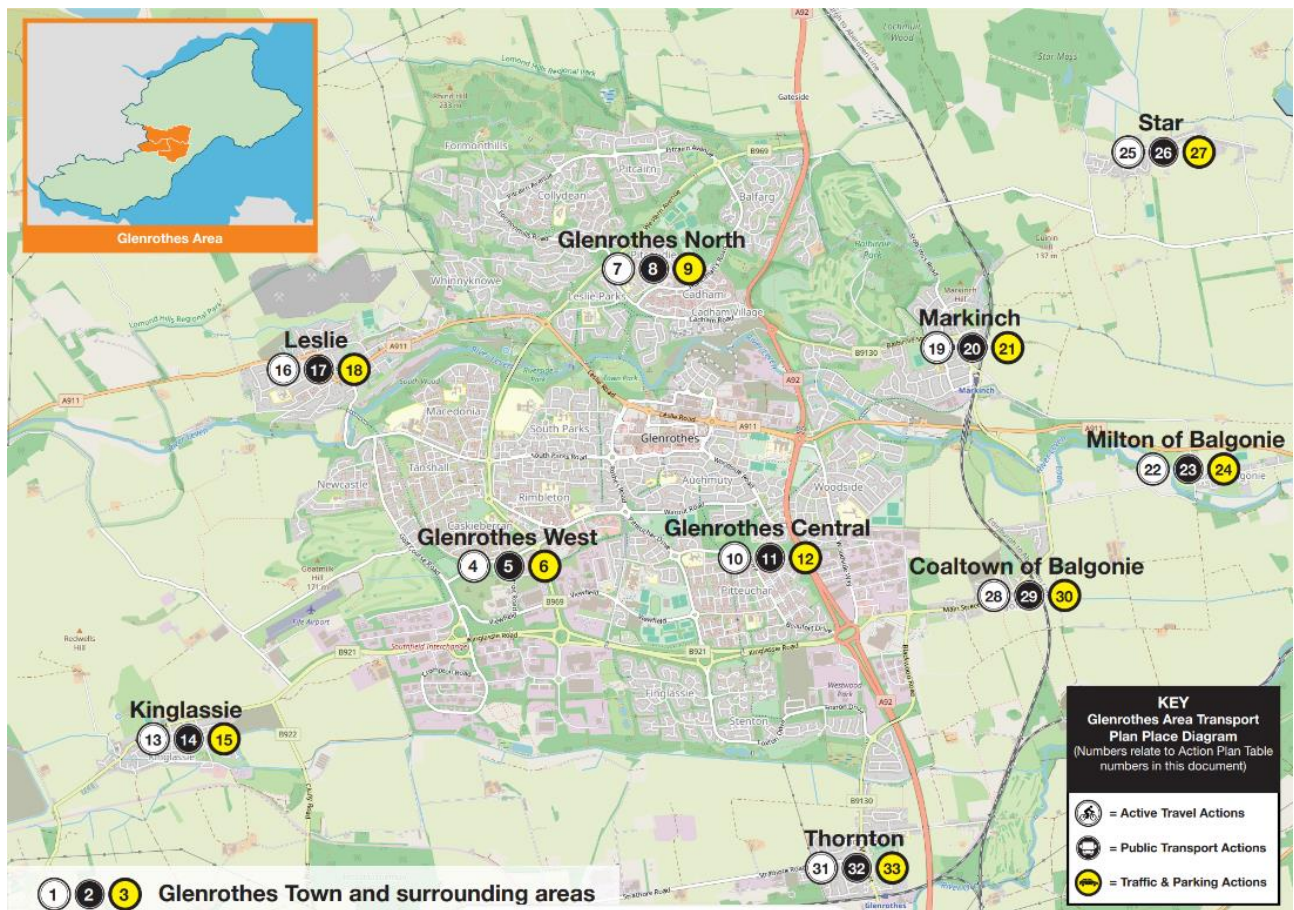
### Option Appraisal

All actions have undergone an options appraisal and support one or more of the Glenrothes Area Transport Plan objectives and Local Transport Strategy priorities, and have been reviewed against Feasibility, Affordability and Public Acceptability.

The measures in the action plan are set out by local place. There is a focus on the key place-making support to connected movement by Active Travel (Walking, Wheeling and Cycling), Public Transport (Bus and Train), Traffic and Parking (Cars and Other vehicles) for each place. These actions have been selected to support local living, in conjunction with other actions in the community with people at the heart of all decision making.

## Place Diagram

The place diagram below is a reference guide to the Glenrothes Area Transport Plan action plan. It shows the Action Plan transport measures table reference numbers that are applicable to each place in Glenrothes town and the settlements surrounding Glenrothes. For example, for public transport actions in Markinch see Table 20 in this report.



The measures will also be translated onto a GIS Map for detailed locational review. Extents of completion will be subject to delivery lead capacity and annual funding constraints.

## Place Priorities

In relation to Active Travel and priorities for actions on walking these will mirror the established priorities for winter gritting of footways, as follows:

**Priority 1:** Main town shopping areas and around centres of high pedestrian usage e.g. pedestrian precincts, hospitals, clinics, main access routes to schools, sheltered housing, residential homes and day centres for the elderly. Main pedestrian routes linking transport interchanges – railways, bus stations etc.

**Priority 2:** Busy urban areas e.g. other shopping centres and around public buildings and other commercial areas not included within priority 1. Main pedestrian routes in major housing developments.

**Priority 3:** Rural and less used urban footways. Un-adopted footways and/or footways subject to construction consents.

<https://www.fife.gov.uk/kb/docs/articles/roads,-travel-and-parking/roads-and-pavements/road-maintenance/roads-and-gritting>

There may be changes due to re-development, and community feedback on the priorities are welcome.

## Glenrothes Town and Surrounding Villages – Common Actions

There are several actions based on community priorities that are common to all places. These are shown in Tables 1-3. Extents of completion will be subject to delivery lead capacity and annual funding constraints.

Place specific actions are shown in the following section in Table 4 to Table 33. Each place has a series of Active Travel, Public Transport and Traffic & Parking actions identified.

*Table 1 - Active Travel Actions*

Action	Measure	Timeframe	Delivery Lead
ATGen1	Carry out regular inspections and maintenance of walking, wheeling and cycling infrastructure.	Short-Long	AT
ATGen2	Improve accessibility and personal security of key walking, wheeling and cycling routes, based on a programme of audits - Priority 1 footway routes	Short-Long	AT
ATGen3	Carry out the Area Roads Programme (ARP) - Footway condition improvements planned annually	Short-Long	RNM

*Table 2 - Public Transport Actions*

Action	Measure	Timeframe	Delivery Lead
PTGen1	On-going annual review Fife Council-subsidised bus services to improve route coverage, frequency and operating hours	Short-Long	PT
PTGen2	Improve accessibility and personal security at key bus stops and interchanges across Glenrothes, based on a programme of audits.	Short-Long	RNM
PTGen3	On-going work with transport providers to improve bus/rail integration through timetabling and the Fife Bus Partnership - focus on rail stations.	Short-Long	PT

*Table 3 - Traffic & Parking Actions*

Action	Measure	Timeframe	Delivery Lead
T&PGen1	Carry out routine inspections and repair programmes to maintain the condition of roads	Short-Long	RNM
T&PGen2	Carry out the annual Area Roads Programme (ARP) - planned road condition, lighting and traffic management improvements	Short-Long	RNM
T&PGen3	Carry out parking enforcement - for example on double yellow lines and other restrictions. Possible exemptions and mitigations for displaced parking are being assessed prior to the introduction and enforcement of Pavement Parking regulations, which will be subject to member approval.	Short-Long	Parking



## Glenrothes Town - Place Specific Actions

### Glenrothes West (Ward 13) - including the neighbourhoods of, Caskieberran, Finglassie, Macedonia, Newcastle, Rimbleton, South Parks and Tanshall

Extents of completion will be subject to delivery lead capacity and funding constraints. Also see Tables 1-3 for common actions applicable to this place.

*Table 4 - Active Travel Actions:*

Action	Measure	Timeframe	Delivery Lead
AT22	Glenwood High School Travel Plan Refresh	Short	TP
AT23	Glenrothes High School Travel Plan Refresh	Short	TP
AT45	South Parks School Travel Plan Refresh at 3yrs+	Short	TP
AT46	Southwood School Travel Plan Refresh at 3yrs+	Short	TP
AT49	Newcastle School Travel Plan Refresh at 3yrs+	Short	TP
AT50	Caskieberran School Travel Plan Refresh at 3yrs+	Short	TP
AT51	St Paul's School Travel Plan Refresh at 3yrs+	Short	TP
AT57	Rimbleton School Travel Plan Refresh at 3yrs+	Short	TP
AT1a	Internal Riverside Park Path Improvements	Short	LP
AT11	Review underpasses for feeling safe by Glenwood Centre, 2 no. Roxburgh Road	Short	CN
AT8	Glenwood Wayfinding audit to the town centre, Riverside Park, Boblingen Way from the Glenwood Centre by walking/cycling	Medium	CN
AT9	Improve walking and cycling experience along the Boblingenway.(Woodside to Leslie Viaduct) improve signage and access , seating, lighting and vegetation maintenance review, subject to funding	Medium	AT
AT10	Widen to cycling/walking route and provide access to SouthWood/core path	Medium	AT
AT30	Caskieberran Drive Active Travel Link, including crossings at roundabouts	Medium	AT
AT75	Accessibility Audit - Barnton Place, Newcastle, by Local shops	Medium	AT
AT64	Audit and Implementation of the Active Travel Network (ATN) in the Glenrothes area based on the Fife Active Travel Strategy (ATS) - subject to approval and funding.	Long	AT

*Table 5 - Public Transport Actions:*

<b>Action</b>	<b>Measure</b>	<b>Timeframe</b>	<b>Delivery Lead</b>
PT4	Consider bus shelters near the Glenwood centre, Stop ID: 34329237 Roxburgh rd SB,	Short	RNM
PT5	Real Time information at bus stops extended outwith the bus station within Glenrothes town following a programme at key locations, subject to funding	Short	PT
PT15	Need for bus stops and shelters in Southfield Industrial Estate. Five locations: Whitworth Road, Rutherford Road, Cavendish Way, Stirling Road, Wheatstone Place, it currently works on a hail and ride basis.	Short	RNM

*Table 6 - Traffic & Parking Actions:*

<b>Action</b>	<b>Measure</b>	<b>Timeframe</b>	<b>Delivery Lead</b>
T&P25	Road, Lighting, Traffic Management, Improvements planned for 2024/25	Short	RNM
T&P13a	Review of Pavement Parking - including, Caskieberran, Finglassie, Macedonia, Newcastle, Rimbleton, South Parks, Tanshall	Short	RNM
T&P15	Glamis Centre (East & West) Carpark EV charging site	Medium	TP
T&P17	Glenwood Centre Carpark, EV charging site	Medium	TP
T&P13b	Implementation of pavement parking possible exemptions and mitigations for displaced parking, subject to member approval	Medium	RNM
T&P27	River Leven Bridge Improvement Measures (White Bridge)	Medium	Structures

**Glenrothes North (Ward 14) - including the neighbourhoods of, Balgeddie, Balfarg, Collydean, Coul, Foresters Lodge, Formonthills, Pitcairn and Pitcoudie**

Extents of completion will be subject to delivery lead capacity and funding constraints. Also see Tables 1-3 for common actions applicable to this place.

*Table 7 - Active Travel Actions:*

Action	Measure	Timeframe	Delivery Lead
AT2b	External Riverside Park -New Ped Crossing Point (B969 Victorian Frame - Fettykill Fox)	Short	AT
AT47	Collydean School Travel Plan Refresh at 3yrs+	Short	TP
AT48	Pitcoudie School Travel Plan Refresh at 3yrs+	Short	TP
AT65	Improved Access to Gilvenbank Park Community Sports and Health Hub via Pitcoudie Avenue (Greenspace path lighting installation and maintenance)	Short	CN
AT1b	Internal Riverside Park Path Improvements	Short	LP
AT32	Signage -Collydean to Pitcoudie via Pitcairn House ( Collydean Way - adopted) Wayfinding, Local Urban route	Medium	CN
AT33	Signage - Collydean to Pitcoudie via Gilvenbank Park ( adopted) Wayfinding, local urban route	Medium	CN
AT36	A92 (T) Markinch Roundabout signalisation with ped/cycle crossings - The Markinch Roundabout signalisation is required under planning conditions in 18/01756/EIA . Subject to agreement with Transport Scotland.	Medium	Developer
At18	A92(T) Active Travel improvement of the A92_longitudinal improvements as per active travel strategy strategic urban routes_Markinch Rb to Preston Rb	Long	Transport Scotland
AT19b	NCN766 on road sections review , Alburne Park(urban).	Long	AT
AT64	Audit and Implementation of the Active Travel Network (ATN) in the Glenrothes area based on the Fife Active Travel Strategy (ATS) - subject to approval and funding.	Long	AT
AT12	Could Den Trail, East Lomond to Pitcarin, Pitcarn and Could Den loop and Glenvale path _ FCCT path maintenance in Lomond Hills Regional Park	Long	FCCT
AT20	River Leven Cycleway_Loch Leven to Leven_between AuchmuirBridge and Milton of Balgonie_a long term ambition of the River Leven project along the river	Long	LP

*Table 8 - Public Transport Actions:*

Action	Measure	Timeframe	Delivery Lead
PT5	Real Time information at bus stops extended outwith the bus station within Glenrothes town following a programme at key locations, subject to funding	Short	PT
PT9	A92(T) New bus stops on A92 at Balbirnie ( CF206-A , BPF report), subject to agreement with Transport Scotland	Short	Transport Scotland
PT16	A92(T) Strategic road signage to Markinch and Thornton Train stations from Markinch Rb and Redhouse Rb, subject to agreement with Transport Scotland	Short	Transport Scotland
PT12	Bus Layby Conversion on A911, conversion to bus cage and reduction of speed limit Morrisons and Auchmuty High School including reduction in speed limit to 40mph. (CF201 A, CR202-A CF203-A) - monitor delay to buses	Medium	RNM
PT8	A92(T) /Cadham Road Junction - Public Transport delay monitoring, consider possibility of diverting through to Markinch Road Roundabout	Medium	Transport Scotland

*Table 9 - Traffic & Parking Actions:*

Action	Measure	Timeframe	Delivery Lead
T&P25	Road, Lighting, Traffic Management, Improvements planned for 2024/25	Short	RNM
T&P12a	Review of Pavement parking - including, Balgeddie, Balfarg, Collydean, Coul, Foresters Lodge, Formonthills, Pitcairn, Pitcoudie	Short	RNM
T&P31	Fife Council has introduced an 18 month trial "School Exclusion Zone" (SEZ) in Iona Park for Pitcoudie Primary School. A School Exclusion Zone (also known as a School Street) is to prevent non-residential traffic using the road network outside a school entrance gate, and / or in surrounding streets, at set periods of the school day - typically during start and finish times.	Short	RNM
T&P12b	Implementation of pavement parking possible exemptions and mitigations for displaced parking, subject to member approval	Medium	RNM
T&P28	A92(T) Markinch Roundabout Improvements - Subject to planning conditions. The Transport Scotland response notes that the Markinch Roundabout signalisation is required, but a northbound merge lane on the A92 is required first. Subject to approvals from Transport Scotland and housing build out, as described in planning conditions.	Medium	Developer

**Glenrothes Central ( Ward 15) - including the neighbourhoods of, Alburne Park, Auchmuty, Pitteuchar, Stenton, Town Centre, Warout and Woodside**

Extents of completion will be subject to delivery lead capacity and funding constraints. Also see Tables 1-3 for common actions applicable to this place.

*Table 10 - Active Travel Actions:*

Action	Measure	Timeframe	Delivery Lead
AT2a	External Riverside Park -New Ped Crossing Point (at the riverside play area Leslie Rd)	Short	AT
AT6	Town Centre Wayfinding Review - Routes to key places within and to/from the town centre by walking/cycling ( Finger posts, TSRTG active travel, map cabinets, totems)	Short	CN
AT37	Shared Use link needed. linking Flemington Road and A92, delivery in agreement with Fife Council's Economic Development Department.	Short	AT
AT19c	NCN766 on road sections review - Woodside Way(urban) - Woodside Way Active Travel corridor	Short	AT
AT71	NCN766 off-road section Bankhead to Thornton - Share with Care signs	Short	AT
AT24	Auchmuty High School Travel Plan Refresh	Short	TP
AT53	Pitteuchar East School Travel Plan Refresh at 3yrs+	Short	TP
AT54	Carleton School Travel Plan Refresh at 3yrs+	Short	TP
AT55	Pitteuchar West School Travel Plan Refresh at 3yrs+	Short	TP
AT56	Warout School Travel Plan Refresh at 3yrs+	Short	TP
AT1c	Internal Riverside Park Path Improvements	Short	LP
AT5	Explore route through the Kingdom Centre ( North-south orientation) to improve connectivity. Location to be determined as part of town centre masterplan.	Medium	TCED
AT31	Walking Link for improvement to shared use Queensway ( widen)	Medium	AT
AT38	Improvement of crossing at Alburne Park junction	Medium	AT
AT34	Woodside Road Underpass Bridge Deck Replacement - Boblingen way (TBC)	Medium	Structures
AT27	A92(T) Bankhead Roundabout signals for active travel crossing, subject to agreement with Transport Scotland	Medium	Transport Scotland
AT18	A92(T) Active Travel improvement of the A92_longitudinal improvements as per active travel strategy strategic urban routes_Markinch Rb to Preston Rb	Long	Transport Scotland
AT28	A92(T) Preston Roundabout signals for active travel crossing, subject to agreement with Transport Scotland, and subject to connecting Active Travel Network Infrastructure	Long	Transport Scotland

AT64	Audit and Implementation of the Active Travel Network (ATN) in the Glenrothes area based on the Fife Active Travel Strategy (ATS) - subject to approval and funding.	Long	AT
------	--	------	----

*Table 11 - Public Transport Actions:*

Action	Measure	Timeframe	Delivery Lead
PT1	Buses need bus stop on North Street (near M&S) - currently request stop at The Henge Retail Park (39/40)	Short	RNM
PT5	Real Time information at bus stops extended outwith the bus station within Glenrothes town following a programme at key locations, subject to funding	Short	PT
PT17	External Riverside Park -( Bus shelters on Leslie Road)	Short	RNM
PT2	LTS objective 9 - Audit town centre bus stops in Glenrothes for accessibility to modern standards	Short	RNM
PT16	A92(T) Strategic road signage to Markinch and Thornton Train stations from Markinch Rb and Redhouse Rb	Short	Transport Scotland
PT10	A92(T) General Bus Delay Reduction inc signalling Preston R/b (no ped crossings) , Bus Priority Fund Item CF204-A, subject to agreement with Transport Scotland	Medium	Transport Scotland
PT20	Continue to tackle anti-social behaviour at Glenrothes bus station by CCTV and providing staff presence. Working Group established between partners.	Medium	PT

*Table 12 - Traffic & Parking Actions:*

Action	Measure	Timeframe	Delivery Lead
T&P11a	Review of Pavement Parking - including, Alburne Park, Auchmuty, Pitteuchar, Stenton, Town Centre, Warout, Woodside	Short	RNM
T&P25	Road, Lighting, Traffic Management, Improvements planned for 2024/25	Short	Assets
T&P29	A911/Sappi Road Roundabout, West Mill Development	Short	Developer
T&P16	Flemington Road Carpark, EV Charging site	Medium	TP
T&P11b	Implementation of pavement parking possible exemptions and mitigations for displaced parking, subject to member approval	Medium	RNM
T&P1	Town Centre Urbanisation Transport Assessment - Potential change to roads hierarchy for Town Centre regeneration will require a review of Town Centre traffic management operations.	Medium	TCED
T&P32	A92(T) Preston Signalisation related to LDP requirements, subject to approval by Transport Scotland	Medium	Planning/ Transport Scotland
T&P33	A92(T) Bankhead Signalisation related to LDP requirements, subject to approval by Transport Scotland	Medium	Planning/ Transport Scotland

## Glenrothes Area Villages - Place Specific Actions

### Kinglassie (Ward 13)

Extents of completion will be subject to delivery lead capacity and funding constraints. Also see Tables 1-3 for common actions applicable to this place.

*Table 13 - Active Travel Actions:*

Action	Measure	Timeframe	Delivery Lead
AT61	Kinglassie School Travel Plan Refresh at 3yrs+	Short	TP
AT68	East Kinglassie housing development site - New footway on south side of B921 and new raised table crossing point.	Short	Developer
AT69	East Kinglassie housing development site - New path connection to Lochty Park, subject to land agreements	Short	Developer
AT4	Pilgrim Way leisure route, maintained by FCCT in greenspace outside extents of Riverside Park ( Kinglassie to Markinch)	Short-Long	FCCT
AT64	Audit and Implementation of the Active Travel Network (ATN) in the Glenrothes area based on the Fife Active Travel Strategy (ATS) - subject to approval and funding.	Long	AT

*Table 14 - Public Transport Actions:*

Action	Measure	Timeframe	Delivery Lead
PT18	New pair of bus stops east of Kinglassie on the B921	Short	Developer

*Table 15 - Traffic & Parking Actions:*

Action	Measure	Timeframe	Delivery Lead
T&P6a	Review of Pavement Parking in Kinglassie	Short	RNM
T&P18	Lochty Avenue Car Park, Kinglassie EV charging site	Medium	TP
T&P6b	Implementation of pavement parking possible exemptions and mitigations for displaced parking, subject to member approval	Medium	RNM
T&P14	B921 Kinglassie Road / B922 Cluny Road Junction - Improvements due to Land to South of Hill view Kinglassie development 22/01021/FULL - relocation of the 20/40mph speed limit , 20 metres left turn lane on the B922 arm of the B922/B921 junction or contribution to traffic signal mitigation, including street lighting	Medium	RNM

## Leslie (Ward 14)

Extents of completion will be subject to delivery lead capacity and funding constraints. Also see Tables 1-3 for common actions applicable to this place.

*Table 16 - Active Travel Actions:*

Action	Measure	Timeframe	Delivery Lead
AT74	Consider new pedestrian crossing point on Leslie High Street between existing ones, exact location to be investigated	Short	AT
AT58	Leslie School Travel Plan Refresh at 3yrs+	Short	TP
AT13	Condition and Accessibility Audit of Footways on A911 High Street Leslie - Greenside to Douglas Road)	Short	RNM
AT14	Cycle route through Leslie - Active Travel Strategy - designated a strategic urban route	Long	AT
AT4	Pilgrim Way leisure route, maintained by FCCT in greenspace outside extents of Riverside Park ( Kinglassie to Markinch)	Long	FCCT
AT64	Audit and Implementation of the Active Travel Network (ATN) in the Glenrothes area based on the Fife Active Travel Strategy (ATS) - subject to approval and funding.	Long	AT

*Table 17 - Public Transport Actions:*

Action	Measure	Timeframe	Delivery Lead
PT19	Provide bus shelter at Douglas Road (southbound)	Medium	RNM

*Table 18 - Traffic & Parking Actions:*

Action	Measure	Timeframe	Delivery Lead
T&P3	Review junction and parking operation High Street/Prinlaws Road for pedestrian accessibility	Short	RNM
T&P5a	Review of Pavement Parking in Leslie	Medium	RNM
T&P2	Review possible village centre raised junction/parking management treatment at A911/Murray Place/Norman Place	Medium	RNM
T&P22	Greenside Carpark EV charging site	Medium	TP
T&P23	Mansfield Road Carpark, EV charging site	Medium	TP
T&P5b	Implementation of pavement parking possible exemptions and mitigations for displaced parking, subject to member approval	Medium	RNM



## Markinch (Ward 14)

Extents of completion will be subject to delivery lead capacity and funding constraints. Also see Tables 1-3 for common actions applicable to this place.

*Table 19 - Active Travel Actions:*

Action	Measure	Timeframe	Delivery Lead
AT21	NCN 766 Clarity over shared cycle/walking routes - share with care - at offroad cycle route at Markinch Station	Short	AT
AT59	Markinch School Travel Plan Refresh at 3yrs+	Short	TP
AT3	Path Improvements Balbirnie Park	Medium	FCCT
AT4	Pilgrim Way leisure route, maintained by FCCT in greenspace outside extents of Riverside Park ( Kinglassie to Markinch)	Short-Long	FCCT
AT19a	NCN766 on road sections review Star/Markinch(rural)	Long	AT
AT64	Audit and Implementation of the Active Travel Network (ATN) in the Glenrothes area based on the Fife Active Travel Strategy (ATS) - subject to approval and funding.	Long	AT

*Table 20 - Public Transport Actions:*

Action	Measure	Timeframe	Delivery Lead
PT3	Continue to support Bus 'services' to Markinch mainline rail station evenings and weekends.	Medium	PT
PT11	General Bus Delay Reduction inc parking formalised in Markinch High Street (CF301-A), subject to funding	Medium	RNM

*Table 21 - Traffic & Parking Actions:*

Action	Measure	Timeframe	Delivery Lead
T&P4a	Review of Pavement Parking in Markinch	Short	RNM
T&P21	Betson Street Carpark EV charging site, subject to Common Good land agreement	Medium	TP
T&P4b	Implementation of pavement parking possible exemptions and mitigations for displaced parking, subject to member approval	Medium	RNM
T&P26	West Mill Footbridge RTA Impact Damage/Protection	Medium	Structures
T&P30a	Rail stations (Markinch and Thornton) are on the edge of town - car parking maintained to support rail park and ride	Long	Parking

## Milton of Balgonie ( Ward 14)

Extents of completion will be subject to delivery lead capacity and funding constraints. Also see Tables 1-3 for common actions applicable to this place.

*Table 22 - Active Travel Actions:*

Action	Measure	Timeframe	Delivery Lead
AT64	Audit and Implementation of the Active Travel Network (ATN) in the Glenrothes area based on the Fife Active Travel Strategy (ATS) - subject to approval and funding.	Long	AT

*Table 23 - Public Transport Actions:*

Action	Measure	Timeframe	Delivery Lead
PT13	A911 Bus Prioritisation - speed limit reduction (40mph) on A911 with junction signalisations A911/Milton Brae, and bus priority at signals ( with ped crossings) - Monitor delays to buses and consider benefit of signalisation in relation to delays at signals	Long	RNM
PT14	A911 Bus Prioritisation - speed limit reduction (40mph) on A911 with junction signalisations A911/Balfour Place and bus priority at signals ( with ped crossings) CF303-A - Monitor delays to buses and consider benefit of signalisation in relation to delays	Long	RNM

*Table 24 - Traffic & Parking Actions:*

Action	Measure	Timeframe	Delivery Lead
T&P10a	Review of Pavement Parking in Milton of Balgonie	Short	RNM
T&P10b	Implementation of pavement parking possible exemptions and mitigations for displaced parking, subject to member approval	Medium	RNM

## Star (Ward 14)

Extents of completion will be subject to delivery lead capacity and funding constraints. Also see Tables 1-3 for common actions applicable to this place.

*Table 25 - Active Travel Actions:*

<b>Action</b>	<b>Measure</b>	<b>Timeframe</b>	<b>Delivery Lead</b>
AT25	Star Main Street Footway Improvements (ARP-Planned)	Short	AT
AT60	Star School Travel Plan Refresh at 3yrs+	Short	TP
AT19a	NCN766 on road sections review Star/Markinch(rural)	Long	AT
AT64	Audit and Implementation of the Active Travel Network (ATN) in the Glenrothes area based on the Fife Active Travel Strategy (ATS) - subject to approval and funding.	Long	AT

*Table 26 - Public Transport Actions:*

<b>Action</b>	<b>Measure</b>	<b>Timeframe</b>	<b>Delivery Lead</b>
---------------	----------------	------------------	----------------------

Refer to general actions common to all areas in Table 2

*Table 27 - Traffic & Parking Actions:*

<b>Action</b>	<b>Measure</b>	<b>Timeframe</b>	<b>Delivery Lead</b>
T&P8a	Review of Pavement Parking in Star	Short	RNM
T&P8b	Implementation of pavement parking possible exemptions and mitigations for displaced parking, subject to member approval	Medium	RNM

## Coaltown of Balgonie ( Ward 15)

Extents of completion will be subject to delivery lead capacity and funding constraints. Also see Tables 1-3 for common actions applicable to this place.

*Table - 28 Active Travel Actions:*

Action	Measure	Timeframe	Delivery Lead
AT64	Audit and Implementation of the Active Travel Network (ATN) in the Glenrothes area based on the Fife Active Travel Strategy (ATS) - subject to approval and funding.	Long	AT

*Table 29 Public Transport Actions:*

Action	Measure	Timeframe	Delivery Lead
--------	---------	-----------	---------------

Refer to general public transport actions common to all areas in Table 2

*Table 30 - Traffic & Parking Actions:*

Action	Measure	Timeframe	Delivery Lead
T&P9a	Review of Pavement Parking in Coaltown of Balgonie	Short	RNM
T&P24	School Road Carpark, EV charging site.	Medium	TP
T&P9b	Implementation of pavement parking possible exemptions and mitigations for displaced parking, subject to member approval	Medium	RNM

## Thornton ( Ward 15)

Extents of completion will be subject to delivery lead capacity and funding constraints. Also see Tables 1-3 for common actions applicable to this place.

*Table 31 - Active Travel Actions:*

Action	Measure	Timeframe	Delivery Lead
AT63	Thornton School Travel Plan Refresh at 3yrs+	Short	TP
AT35	River Ore Thornton Partial Deck Replacement (Footways only)	Medium	Structures
AT19e	NCN766 on road sections review - Thornton(rural)	Long	AT
AT19d	NCN766 on road sections review - Heatherywood (rural)	Long	AT
AT64	Audit and Implementation of the Active Travel Network (ATN) in the Glenrothes area based on the Fife Active Travel Strategy (ATS) - subject to approval and funding.	Long	AT
AT70	Review linking Milton and Coaltown of Balgonie, Thornton and the Wemyss villages by active travel.	Long	CN

*Table 32 - Public Transport Actions:*

Action	Measure	Timeframe	Delivery Lead
PT7	The Thornton to Leven Rail Line will provide access to and from Leven and Cameron Bridge in 2025 from Glenrothes with Thornton Station - NEW rail line and train services to Cameron Bridge and Leven	Short	Network Rail/ ScotRail

*Table 33 - Traffic & Parking Actions:*

Action	Measure	Timeframe	Delivery Lead
T&P7a	Review of Pavement Parking in Thornton	Short	RNM
T&P19	Strathore Road Carpark EV charging site, subject to agreement with Community Services	Medium	TP
T&P20	Thornton Railway Station EV charging site	Medium	TP
T&P7b	Implementation of pavement parking possible exemptions and mitigations for displaced parking, subject to member approval	Medium	RNM
T&P30b	Rail stations (Markinch and Thornton) are on the edge of town - car parking maintained to support rail park and ride	Long	Parking

## Strategic Transport Routes and Services

There are several strategic transport routes and services that serve and cross through the Glenrothes area, with individual projects that have been identified in the tables above.

### *Active Travel:*

There is a future Active Travel Network within Glenrothes and connecting to other part of Fife that has been developed through the Fife Active Travel Strategy. The National Cycle Network NCN766 , supported by Sustrans runs from Kirkcaldy to St Andrews (via NCN1) through the Glenrothes area. The Pilgrim Way leisure route, is maintained by FCCT in the greenspace outside extents of Riverside Park (Kinglassie to Markinch).

### *Public Transport*

Longer distance bus services to other parts of Fife, as well as longer distance Coach and Train services connecting to the cities of Dunfermline, Perth, Dundee, Edinburgh, and Glasgow are operated by bus and rail companies. The Glenrothes bus station, and rail stations, Markinch and Glenrothes with Thornton, act as strategic transport hubs for longer distance travel.

### *Traffic & Parking*

The A92 trunk road strategic corridor, owned and operated by Transport Scotland, has several identified improvement projects in the action plan tables that can contribute to the development of an updated Fife A92 Action Plan between Dundee and Dunfermline.

## Lead Delivery Organisations Information

Fife Council works across its services and with partners to enable effective and connected transport networks to support access to services, jobs and green space to support communities and places. Transport Networks in Glenrothes area include walking, cycling and wheeling, public transport, traffic and parking. The following listing gives information on the role of each delivery lead with a mission statement or description of departments.

- **Active Travel (Fife Council)** - We encourage everyday journeys and want to make it easier for people to travel around safely and efficiently. This includes improved walking and cycling routes.
- **Travel Planning ( Fife Council)** - School travel plans are simply a list of actions that a school agrees and commits to undertake to reduce the barriers to active travel for as many staff, pupils and parents as possible. Here in Fife, the plan is developed and delivered by schools and supported by a dedicated travel plan team.
- **Parking , FC Parking Team** - Fife Council provides both on and off street parking for public use. This includes 174 car parks and a total of 12,000 parking spaces. We maintain a register of public car parks that we own and try to ensure that there are enough short-stay parking spaces and quality Park-and-Ride facilities to enable people to gain ready access to town centres.

- **PT , FC Passenger Transport** - Fife is served by an extensive and demand responsive transport network. Most bus services in Fife are provided on a commercial basis. The Council subsidises around 10% of the network, mainly in the evening/weekends but also in many rural areas. These routes carried 2.3 million passengers in 2019.
- **RNM , FC Roads Network Management** -Transportation Services is responsible for inspecting reported road defects and potholes and arranging any necessary repairs on the non-trunk, adopted roads in Fife. The following types of faults can also be reported by telephoning our contact centre:
  - Bus shelters
  - Drains
  - Flooding
  - Grit bins
  - Gullies
  - Potholes and uneven slabs
  - Safety barriers and pedestrian guardrails
  - Boundary fences
  - Signs and bollards
  - Street nameplates
  - Temporary traffic lights (road works)
  - Verges, trees and hedges
  - Walls and embankments
  - Winter maintenance
- **Structures , FC Structural Services** - responsible for bridges, structures, flooding, shoreline and harbours.
- **GM , FC Grounds Maintenance** - responsible for delivering high-quality environments by providing well-managed and carefully maintained parks, streets and open spaces.
- **TCED , FC Town Centre Economic Development** - Business & Employability Services are responsible for developing initiatives to promote economic growth, enhance employability and supporting local businesses
- **Planning , FC Planning Service** leads the Local Development Plan, the spatial strategy of Plan4Fife, and related planning policy. Supports place-based solutions with key stakeholders.
- **CN , FC Communities & Neighbourhoods** - Communities and Neighbourhoods support integrated community services, community engagement and capacity building, community planning and anti-poverty work, community safety, community investment, projects and programmes and the development of community assets. The service also works in partnership to promote opportunities for learning, culture, sports, leisure and active communities.
- **FBP , Fife Bus Partnership ( 6 partners)** The Fife Bus Partnership is working to improve the bus network across Fife, for residents, businesses, and visitors alike. The project aims to make it easier and more attractive to take the bus in Fife because at the moment, it is not as easy or convenient as we would like it to be. The Fife Bus Partnership is made up of:
  - Fife Council

- Stagecoach
- Moffat and Williamson
- Bay Travel
- SEStran
- Bus Users Scotland
- **LP , The Leven Programme (11 partners)** The Leven Programme is a series of connected projects along the River Leven in Fife, which have the environment and people at its heart. The main Leven Programme partners are: SEPA, Scottish Enterprise, NatureScot, Fife Council, Sustrans, Scottish Water, Fife College, Forth Rivers Trust, Green Action Trust, Diageo, Keep Scotland Beautiful, Historic Environment Scotland, Zero Waste Scotland, Fife Coast and Countryside Trust, The Coal Authority.
- **FCCT , Fife Coast & Countryside Trust** - The Fife Coast and Countryside Trust is an independent charity working with partners for a healthy environment that supports wellbeing and sustains the balance between people and nature. Spread across more than 65 sites, FCCT maintains the Fife Coastal Path, Fife Pilgrim Way, the Lomond Hills Regional Park, local nature reserves, and award-winning beaches.
- **TS , Transport Scotland** - The national transport agency for Scotland. We seek to deliver a safe, efficient, cost-effective and sustainable transport system for the benefit of the people of Scotland, playing a key role in helping to achieve the Scottish Government's Purpose of increasing sustainable economic growth with opportunities for all of Scotland to flourish.
- **Sustrans** - custodians of the National Cycle Network, it's our role to care for it, improve it and champion a long-term vision for its future
- **Developer , Private Developer** – Developers are obligated to provide transport improvements as part of planning applications. The level of improvement is determined by Fife Council Development Management - reviewing planning applications and permissions, enforcements and making decisions on local policies through its statutory duties through 2,200+ planning applications per year with the Transportation arm reviewing development proposals and Road Construction Consents.

## Funding and Delivery

The actions in the action plan are community and development priorities to develop the Glenrothes area into a place with improving active travel, public transport, traffic and parking offerings with the vision of fair and sustainable access for all.

The lead organisations may not have the direct resources and funding identified to implement all actions at this time but by working together it should be possible over time and subject to local area and lead organisation approvals to take most actions forward over the lifetime of the plan. Some actions may also be subject to traffic road order legislation where there is no guarantee of delivery.



## Monitoring

All proposed measures are being placed on a geographic information system (GIS) to aid presentation of the measures for monitoring purposes.

Annual monitoring of progress is expected take place as part of active travel, public transport and traffic and parking annual budgeting exercises.